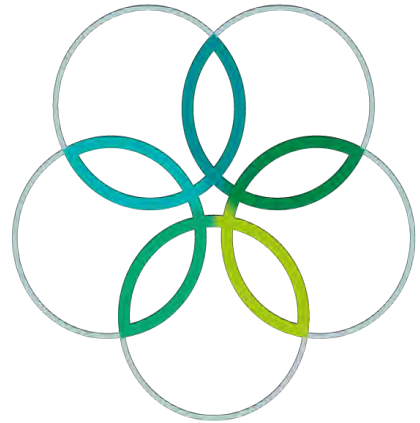


INTERNATIONAL  
BIOLOGY  
OLYMPIAD e. V.

IBO



All IBO examination questions are published under the following Creative Commons license:



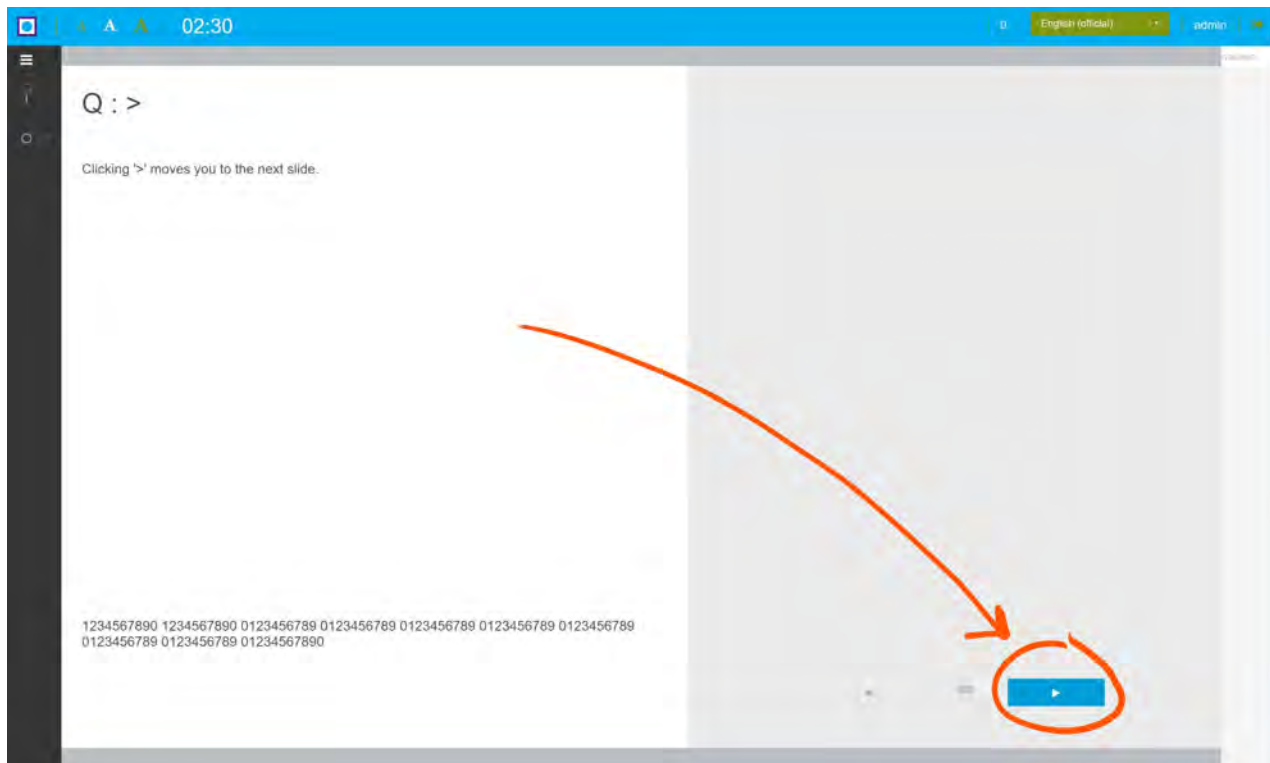
CC BY-NC-SA (Attribution-NonCommercial-ShareAlike) -  
<https://creativecommons.org/licenses/by-nc-sa/4.0/>

The exam papers can be used freely for educational purposes as long as IBO is credited and new creations are licensed under identical terms. No commercial use is allowed.

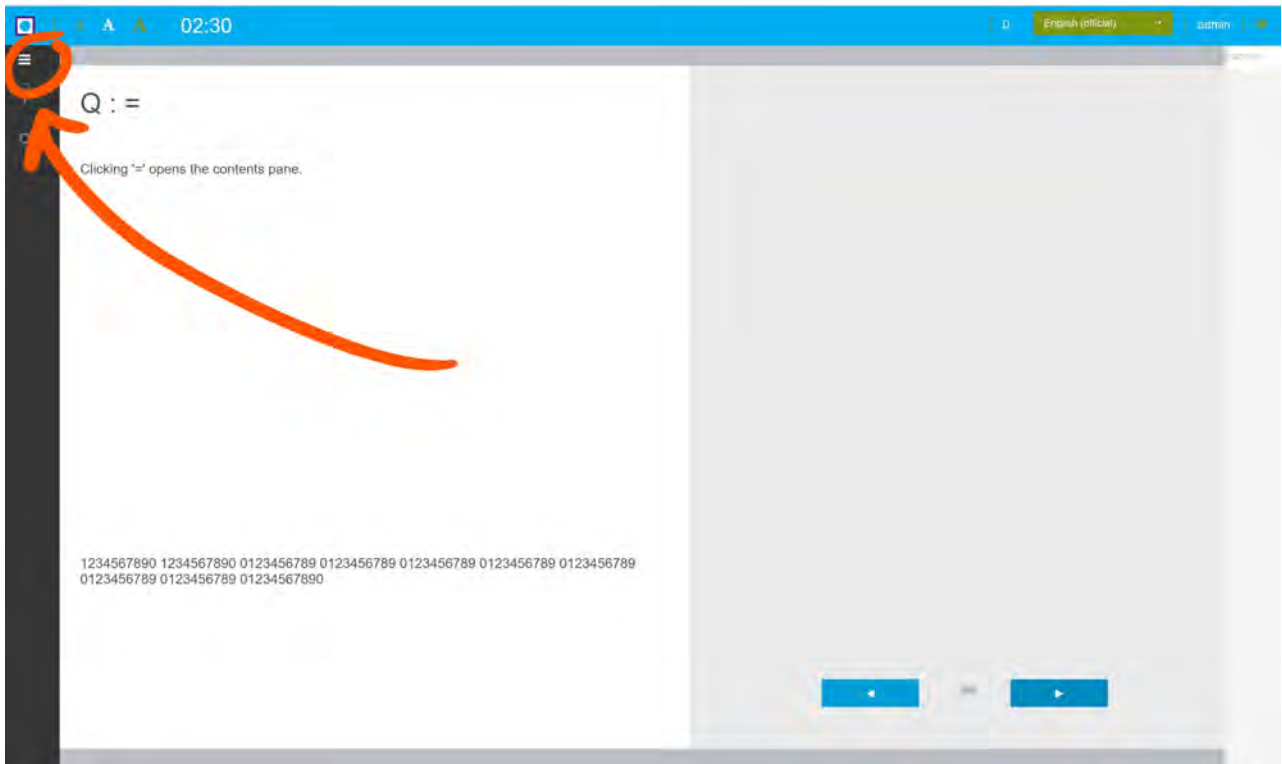
# NAVIGATING SLIDES

**View all the introductory slides before moving to the first question. They contain essential and useful information,** including instructions and useful scientific definitions.

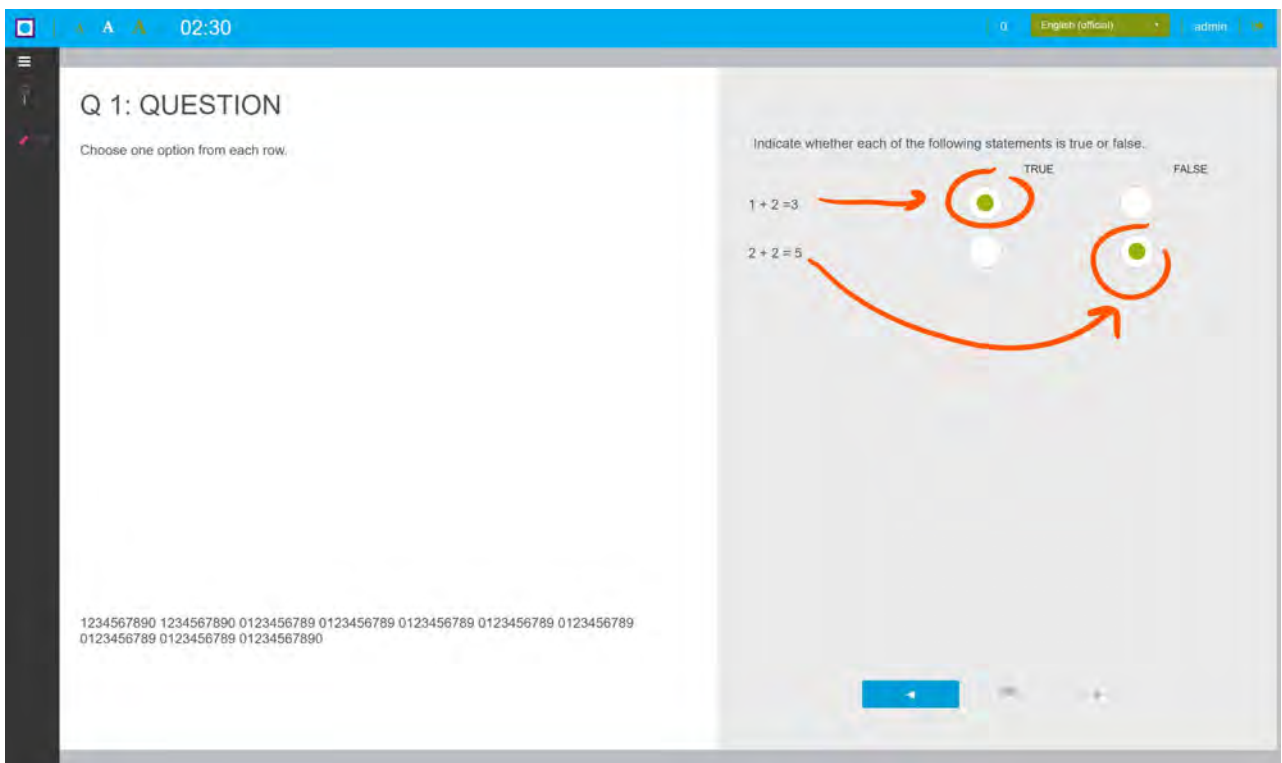
Click '>' to move to the next page.



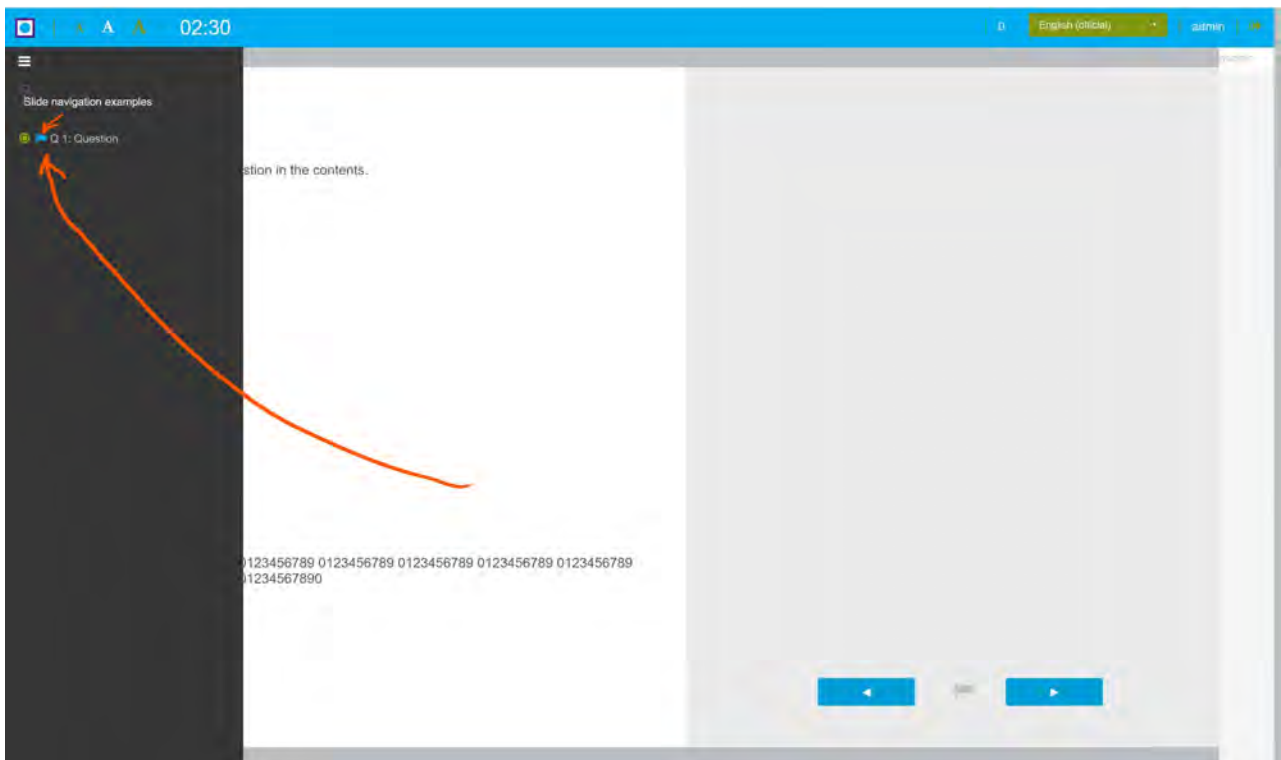
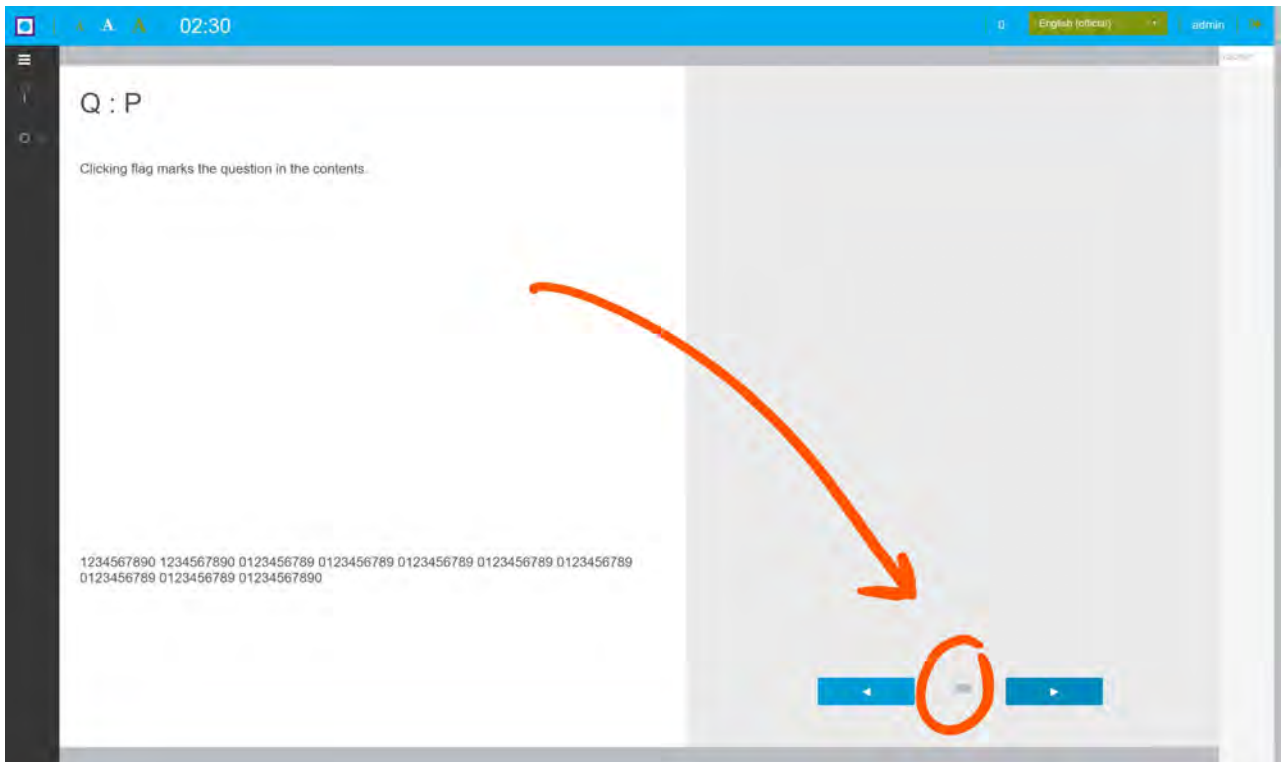
Click the burger to view the contents of the exam. Click it again to close the contents.  
Then click '>'



For all questions, select one option per row. All your answers can be changed at any time during the exam, and will be saved automatically.



The flag icon can be used to mark questions in the contents pane.



# INSTRUCTIONS FOR THE THEORY EXAMINATIONS

## PAPER 1: 8.30AM - 11.30AM

---

### Instructions

Each paper comprises 46 questions, which will be completed on a computer.

You MUST answer ALL parts of ALL questions. For multiple-true/false tasks, answer each statement with either 'true' or 'false'. Between none and all of the statements may be true. For calculations, choose the number nearest to the correct answer. You should make your best guess if you are unsure; you will not be penalised for incorrect guesses, but may gain marks.

Each correct answer will score 1 mark. Each incorrect or missing answer will score 0 marks.

You SHOULD attempt the questions IN ORDER, and come back later to any that you cannot answer. You can flag these by clicking the flag icon, and see your progress by opening the contents pane on the left-hand side. You may find that ideas explored in earlier questions help you answer later questions.

Some figures can be enlarged by clicking on them.

You can change the language you view the papers in by choosing an option from the top right corner.

*You will need to use the information given to you in each question creatively, but you will never require advanced technical or specialised knowledge.*

You MUST have the following equipment for this exam.

- Approved calculator
- Pen/pencil
- You will be provided with scrap paper. You MUST NOT bring any paper into, or out of, the exam room. A copy of this document will be available on the first page of each exam.

### Regulations

You MUST NOT communicate with ANY other candidate at ANY time, whilst you are in the examination room.

You MUST NOT open ANY other windows on your computer.

You MUST NOT access ANY information that could unfairly help you whilst the examination is in progress.

If you require the assistance of a guide you should raise your hand, and remain facing forward until given further instructions.

You MUST NOT attempt to leave your computer station without the assistance of a guide.

If you experience technical problems, you MUST inform a guide IMMEDIATELY.

***Good luck!***

# USEFUL SCIENTIFIC DEFINITIONS

## USEFUL SCIENTIFIC DEFINITIONS

These terms have featured in IBO exams for many years, but you may not be familiar with their precise definitions.

<b>WT</b>	In all cases, <i>WT</i> refers to <i>wild-type</i> . Wild-type organisms have not been genetically manipulated, or otherwise chosen for a specific genetic property.
<b>Knockout</b>	<i>Knockout</i> refers to an organism which has had a specific gene, which is stated in the question, mutated such that no functional product is produced from it.
<b>Haplotypes</b>	<p>A haplotype is a combination of alleles that occur on the same DNA molecule. For example, if genes A, B, C, D, and E are located on the same chromosome, and each gene has two alleles, this genomic region can have many different haplotypes (AbCdE, abcDE, ABCde etc.). If these genes are strongly genetically linked, some haplotypes will occur in the population more often than expected by chance, i.e. specific alleles of one gene will usually co-occur with specific alleles of the linked genes.</p> <p>Mutations within such a linked region create new haplotypes, descended from the old. Meiotic crossing over within the region breaks existing haplotypes and randomly recombines alleles thus eliminating the association between alleles over time.</p>
<b>mmHg</b>	Millimeters of mercury. Biologists usually use mmHg as the unit for pressure. mmHg are directly proportional to Pascals and cmH <sub>2</sub> O, but give rounder numbers in most biological situations.
<b>Partial pressure (P<sub>Gas</sub>)</b>	<p>Partial pressure measures the pressure that a gas would exert on its surroundings if only that gas was present. Partial pressures are noted as P<sub>gas</sub> (e.g. P<sub>O<sub>2</sub></sub> = partial pressure of oxygen).</p> <p>For example, the total pressure of atmospheric air, at sea-level, is 760 mmHg, and oxygen makes up 21 % of all the molecules in atmospheric air. Therefore the partial pressure of oxygen in atmospheric air is P<sub>O<sub>2</sub></sub> = 0.21 x 760 = 160 mmHg.</p> <p>The partial pressure of a gas in solution, is the partial pressure that the gas would have in air which is in equilibrium with the solution. For example, the partial pressure of oxygen in a glass of water exposed to atmospheric air for a long time will also be 160 mmHg. Hence, partial pressures are used by biologists to predict the rate and direction of gas transfer and equilibrium conditions.</p> <p>Partial pressures are NOT directly proportional to the concentration of the gas in a solution. Concentration depends on partial pressure, solubility, temperature etc.</p>
<b>Expression</b>	<p>Many DNA genes are transcribed to produce RNA, which is translated to produce a polypeptide. This folds, and may be modified, to give a functional protein. Unless stated otherwise, the expression level of a gene describes how much functional product it is generating through the combined action of these processes.</p> <p>Therefore, if expression is increased, more functional protein is being produced. This does not necessarily mean there is increased amounts of protein (it may be degraded quickly). The functional product may also need further steps to become activated.</p>
<b>Arrows</b>	In scientific diagrams, arrows are taken to mean <i>leads to</i> , <i>activates</i> , <i>becomes</i> , or simply a label.
<b>Flat-headed arrows</b>	In scientific diagrams, flat-headed arrows are taken to mean <i>inhibits</i> , <i>blocks</i> , or <i>reduces</i> .

# BLUEPRINTS OF LIFE

## SEQUENCING

Frederick Sanger (1918-2013) invented protein, RNA and DNA sequencing, and Sir Shankar Balasubramanian (1966-present) invented high-throughput DNA sequencing. The National Health Service is sequencing an unprecedented 100 000 genomes from rare-disease patients, but different sequencing technologies have different merits for this purpose, as described below.

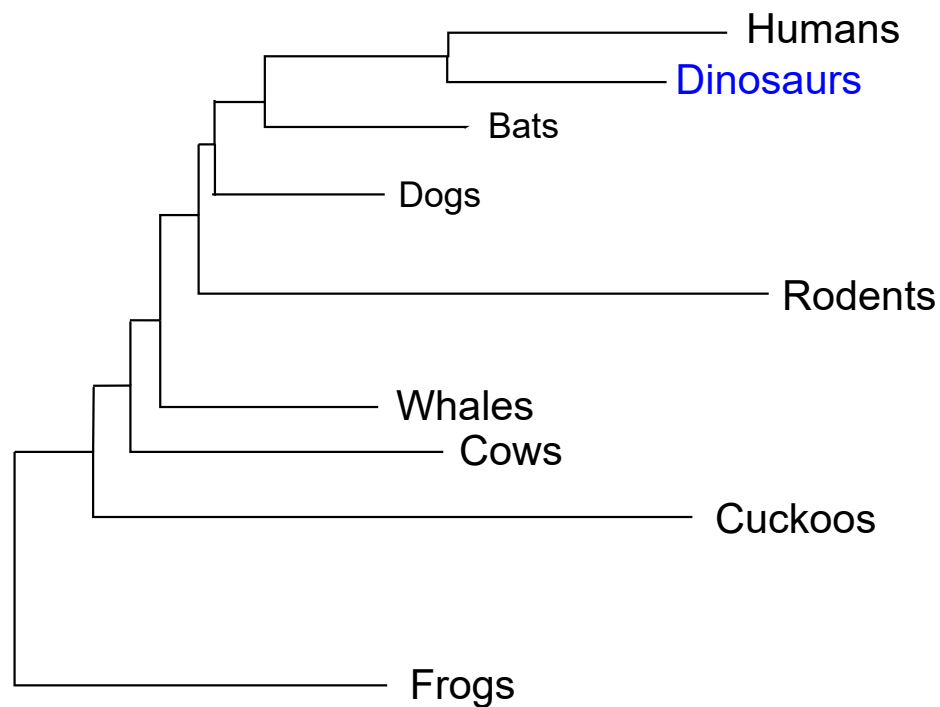


Technology	Maximum length of sequence fragments which can be read	Error rate	Total number of bases sequenced per sample per day
Sanger sequencing	900 bp	1 in 1000 bp	900 bp (1 fragment)
Illumina machines	200 bp	1 in 100 bp	$3 \times 10^{11}$ bp ( $>1.5 \times 10^9$ fragments)
PacificBiosciences machines	5000 bp	1 in 10 bp	$4 \times 10^8$ bp ( $>80\,000$ fragments)

	True	False
Illumina technology is best for finding new Single Nucleotide Variations (mutations to a single base) in the patient genomes.	<input type="checkbox"/>	<input type="checkbox"/>
PacificBiosciences technology is best for assessing transcriptional changes by RNA sequencing.	<input type="checkbox"/>	<input type="checkbox"/>
PacificBiosciences technology is best for finding rearrangements of chunks of DNA in the patient genomes.	<input type="checkbox"/>	<input type="checkbox"/>
Sanger sequencing is best for validating sequencing results before using patients' genetic information to guide clinical interventions.	<input type="checkbox"/>	<input type="checkbox"/>

## ANCIENT DNA

Mark Thomas (1964-present) read the first DNA sequences from woolly mammoths (*Mammuthus primigenius*). However, ancient DNA analysis remains difficult, due to degradation, contamination, and polymerase inhibitors found in the samples. Scientists attempted to extract DNA from a dinosaur fossil and analyse the sequence of one specific gene. The following phylogeny was produced after comparing the sequence against other species.

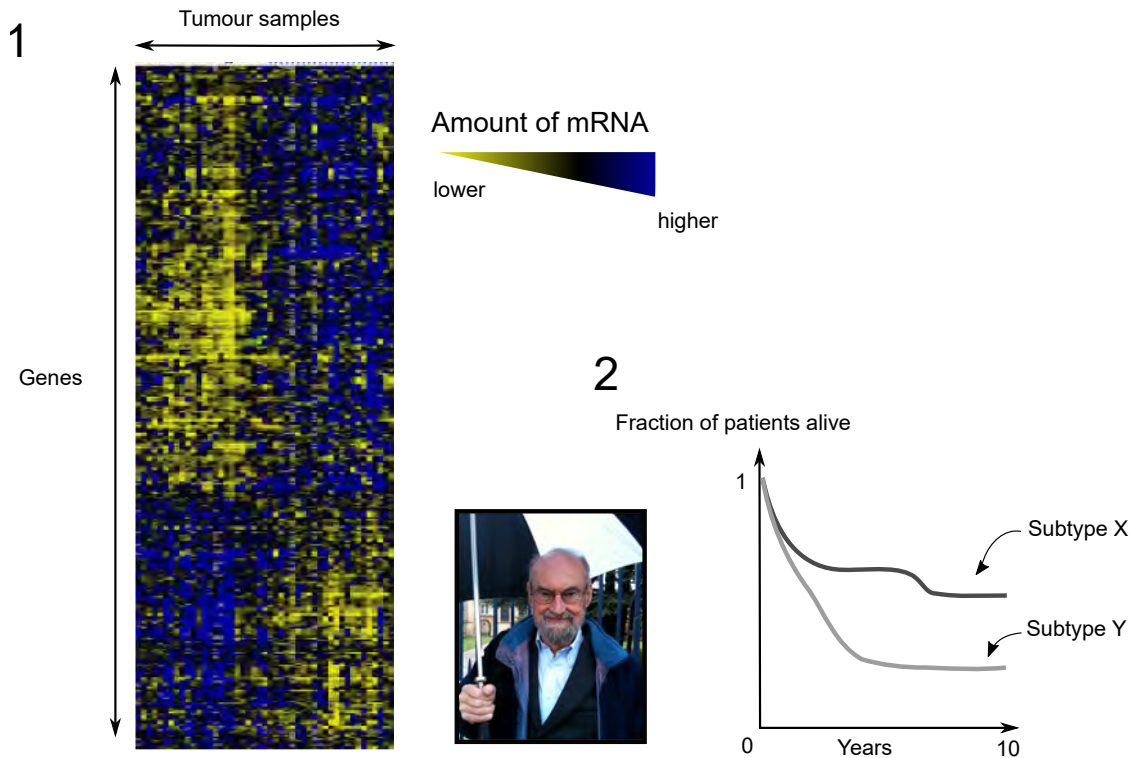


	True	False
When working with ancient samples, it is easier to recover DNA sequences from a mitochondrial gene than a nuclear gene of the same length.	<input type="checkbox"/>	<input type="checkbox"/>
It is better to sequence very long DNA fragments from ancient samples, than very short fragments.	<input type="checkbox"/>	<input type="checkbox"/>
Adding a DNA fragment of a known sequence could show whether or not samples contain polymerase inhibitors.	<input type="checkbox"/>	<input type="checkbox"/>
This dinosaur fossil extract is likely to contain contaminating DNA.	<input type="checkbox"/>	<input type="checkbox"/>



# CANCER MICROARRAY

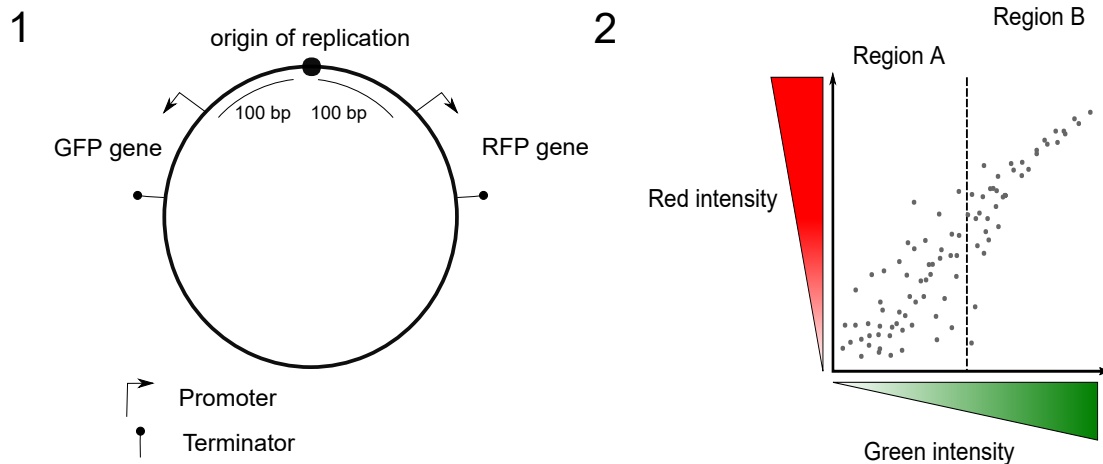
Sir Edwin Southern (1938-present) invented microarrays to analyse the expression of hundreds of genes simultaneously. A microarray has probes printed onto it which detect a specific complementary mRNA. These probe for mRNAs expressed from across the genome. Diffuse Large B Cell lymphomas (DLBCL) from tens of patients were analysed by microarray (1). Additionally, patient survival rates for two clinical subtypes of DLBCLs were measured (2).



	True	False
The data rule out patient survival rate being determined by differences in gene expression between DLBCL subtypes.		
Gene expression data suggest there are two major subtypes of DLBCL distinguishable at the molecular level.		
Measuring the expression of a single gene is sufficient to distinguish subtypes of DLBCLs.		
Each subtype of DLBCL has an equal number of relatively up-regulated versus down-regulated genes compared to other subtypes.		

## GENE EXPRESSION NOISE

A plasmid was inserted into bacteria (1). Red fluorescent protein (RFP) or green fluorescent protein (GFP) are produced from the genes in this plasmid whenever transcription factors bind to their promoters. The red and green gene promoter sequences are identical. Plasmid DNA replication starts at the origin of replication, and replication forks move outwards in both directions at the same speed. Replication occurs whenever replication factors bind to the origin of replication. The red and green fluorescence intensity of individual bacteria was measured (2).

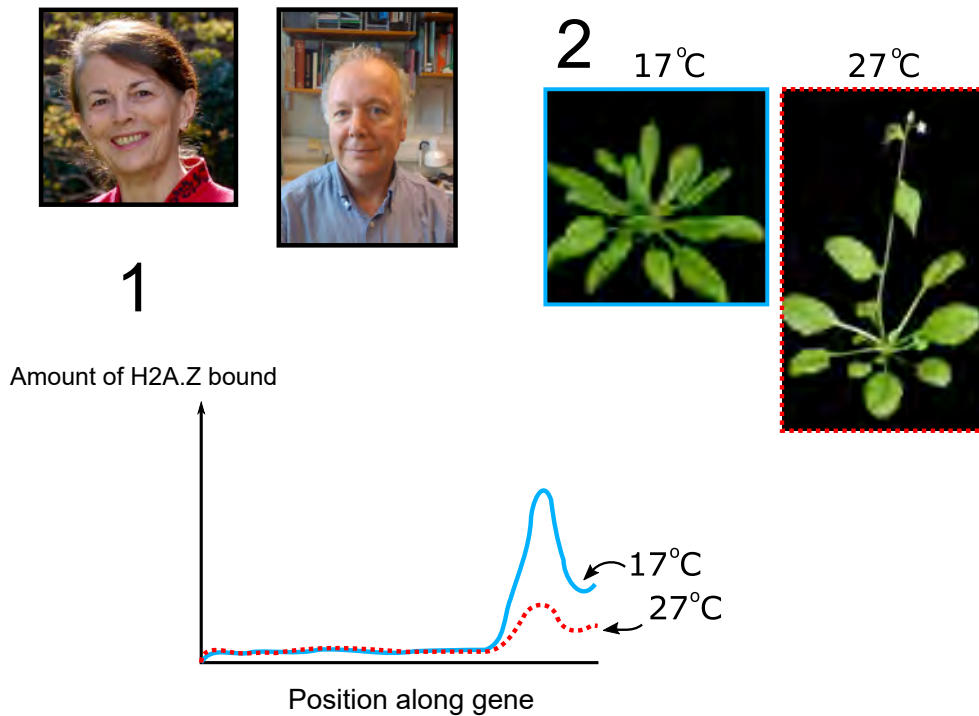


	True	False
Replicating plasmids have unequal numbers of red fluorescent protein and green fluorescent protein genes.	<input type="checkbox"/>	<input type="checkbox"/>
On average, cells in Region A contain more replication factors than those in Region B.	<input type="checkbox"/>	<input type="checkbox"/>
On average, cells in Region A contain more transcription factors than those in Region B.	<input type="checkbox"/>	<input type="checkbox"/>
Increasing the activity of transcription factors is expected to increase the number of cells containing equal amounts of green fluorescent protein and red fluorescent protein.	<input type="checkbox"/>	<input type="checkbox"/>

## EPIGENETICS OF FLOWERING

Dame Jean Thomas (1942-present) discovered that eukaryotic DNA is tightly wrapped around histone proteins. Sir Adrian Bird (1947-present) helped explain the epigenetic marks of DNA. For example, the classical histone H2A, can be replaced by a variant, H2A.Z.

H2A.Z occupancy on a pro-flowering gene (1) in *Arabidopsis* plants (2) of the same age, at different temperatures, was measured.

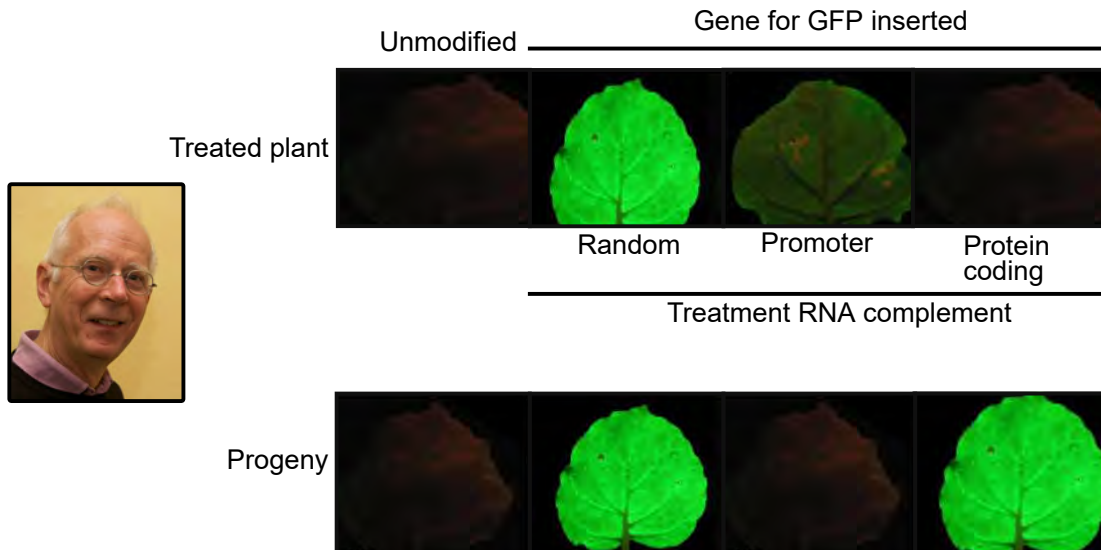


	True	False
Increasing temperature increases pro-flowering gene expression.	<input type="checkbox"/>	<input type="checkbox"/>
H2A.Z enhances gene expression.	<input type="checkbox"/>	<input type="checkbox"/>
Temperature moves the locations to which H2A.Z binds in the genome.	<input type="checkbox"/>	<input type="checkbox"/>
Plants that flower early may have increased H2A.Z occupancy in this gene before flowering.	<input type="checkbox"/>	<input type="checkbox"/>

## GENE SILENCING

Sir David Baulcombe (1952-present) discovered RNA-directed gene silencing.

The gene for green fluorescent protein (GFP) was inserted into plants. The plants were treated with RNAs, which silence GFP, and were then allowed to set seed (the treatment RNAs are not present in the next generation). The treatment RNA sequence was complementary to either the promoter or the protein coding sequences of GFP, or random (non-complementary). The parent plants, their progeny, and controls were imaged under a UV light.



	True	False
Leaves expressing GFP appear darker under UV light.	<input type="checkbox"/>	<input type="checkbox"/>
RNA-directed gene silencing is possible without using treatment RNAs designed to target mRNA.	<input type="checkbox"/>	<input type="checkbox"/>
Changes in the expression level of genes can be inherited from one generation to the next without mutating the DNA sequence.	<input type="checkbox"/>	<input type="checkbox"/>
Silencing against the protein coding sequence is heritable.	<input type="checkbox"/>	<input type="checkbox"/>





	True	False
Using the pair of modified Cas9s and guideRNAs increases off-target damage to other genes.	<input type="checkbox"/>	<input type="checkbox"/>
The <i>Streptococcus pyogenes</i> genome has more NGG sites than expected by chance.	<input type="checkbox"/>	<input type="checkbox"/>
If the gene has no GG sequences, Cas9s from other species should be investigated for alternatives.	<input type="checkbox"/>	<input type="checkbox"/>

## REPLICATION FORK

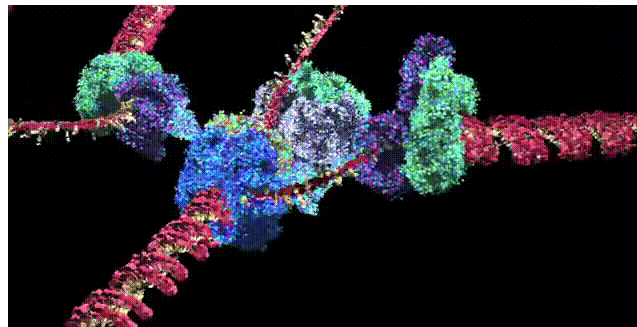
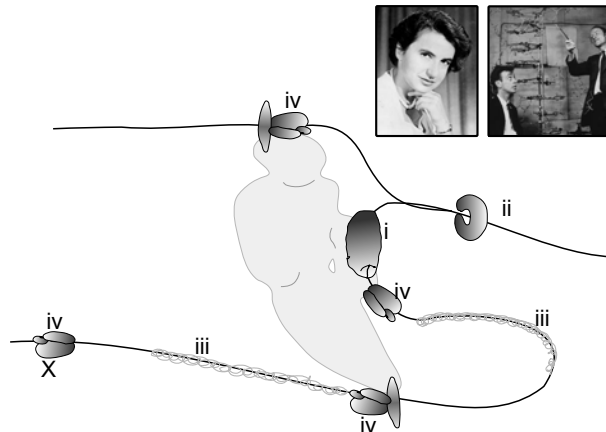
X-ray crystallography, invented at the Royal Institution, was used by Sir Francis Crick (1916-2004) and Rosalind Franklin (1920-1958) to discover the structure of DNA, and predict the mechanism of its replication. Building on their work, this is the current predicted structure of an *E. coli* DNA replication fork, which moves along DNA at 1000 bp/s.

i = Tube shaped clamp, which pulls on one DNA strand.

ii = Topoisomerase, which makes temporary cuts in one phosphodiester backbone.

iii = Single-stranded DNA binding protein.

iv = Different polymerases.

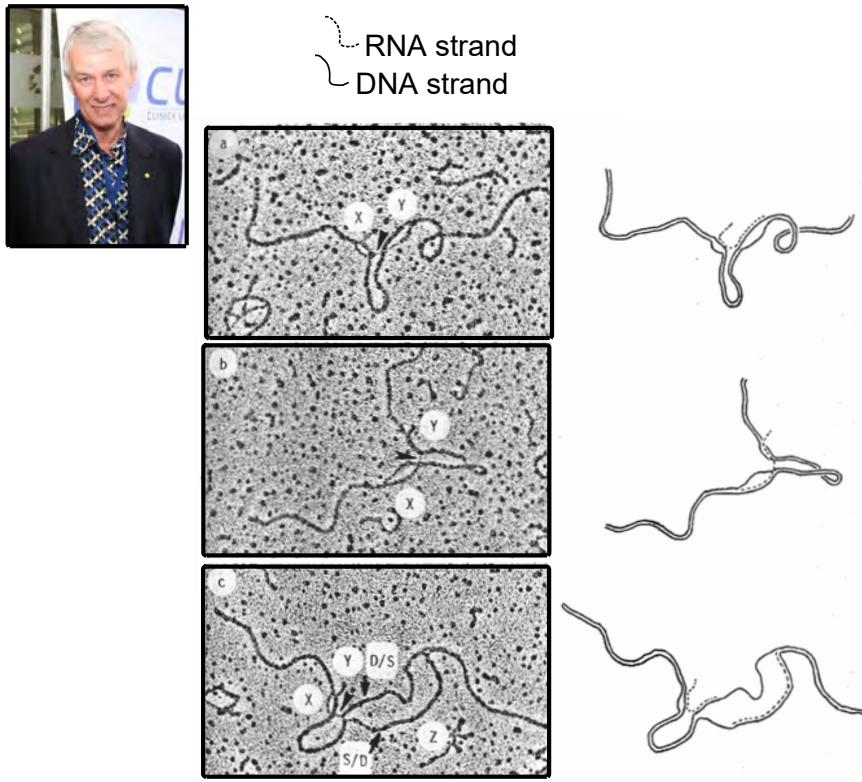


	True	False
Antibiotics which poison topoisomerase cause DNA ahead of the fork to become over twisted.	<input type="checkbox"/>	<input type="checkbox"/>
An activity of polymerase complex X is to replace ribonucleotide uracil, with deoxyribonucleotide thymidine.	<input type="checkbox"/>	<input type="checkbox"/>
Enzyme i is preferentially loaded at G/C rich (A/T poor) sequences.	<input type="checkbox"/>	<input type="checkbox"/>
Protein iii assists complementary base pairing.	<input type="checkbox"/>	<input type="checkbox"/>



## SPLICING

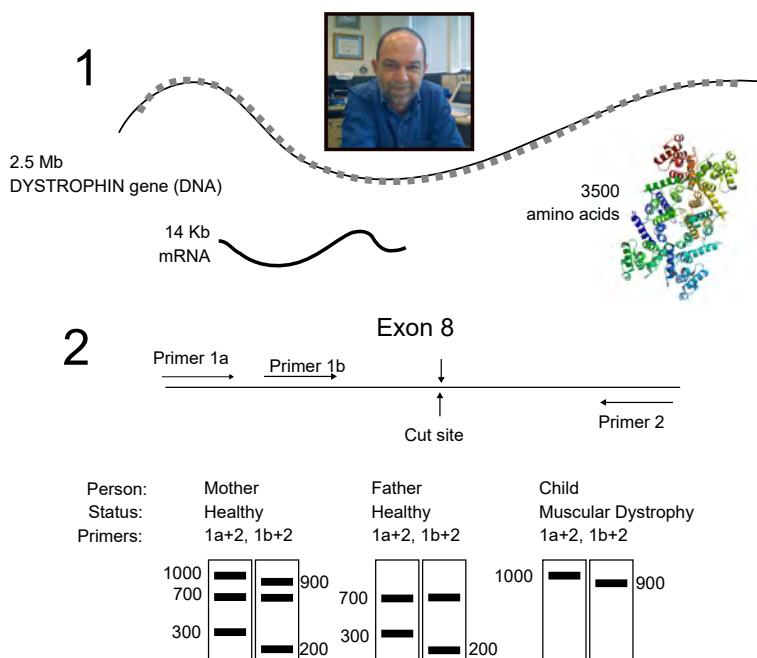
Sir Richard Roberts (1943-present) discovered the fundamental structure of genes using adenovirus genomes. Under an electron microscope, Roberts identified adenoviral DNA and RNA strands. Eukaryotic mRNA was later found to be missing parts (introns) of the genes, because the RNA sequence was rearranged by splicing.



	True	False
Each adenovirus RNA is transcribed from the same DNA strand for the whole RNA.	<input type="checkbox"/>	<input type="checkbox"/>
Adenovirus mRNA remains bound in a DNA-RNA hybrid duplex for a period of time.	<input type="checkbox"/>	<input type="checkbox"/>
Transcription requires helicase activity (separates the two DNA strands).	<input type="checkbox"/>	<input type="checkbox"/>
mRNA splicing of these Adenovirus genes uses a similar mechanism to typical Eukaryotic splicing.	<input type="checkbox"/>	<input type="checkbox"/>

# DYSTROPHIN

Muscular Dystrophy is caused by alterations to *DYSTROPHIN* (1). This is a very large gene, and its length affects the biology and diagnosis of Muscular Dystrophy. RNA polymerase moves along DNA at 30 bp per second. DNA polymerase has an error rate of  $10^{-8}$  mistakes per base. Repair systems later correct 99% of mistakes. Sir Alec Jeffreys (1950-present) invented DNA fingerprinting (RFLPs) whereby *DYSTROPHIN* exons may be amplified by PCR, treated with DNA-cutting enzymes (endonucleases), and separated on an agarose gel, according to length in bp (2).



	1 second	1 minute	1 hour	10 hours	1 day
Select the nearest time to the correct answer.					

	50	500	5000	50000	5000000
Choose the nearest number to the correct answer.					

	100 bp	200 bp	300 bp	700 bp	1000 bp
Primer 1b binding site.					
Endonuclease cut site					
Primer 2 binding site.					

	True	False
<i>DYSTROPHIN</i> is on the X chromosome.		
Muscular Dystrophy is dominant.		
DYSTROPHIN protein could be made in bacteria with a 20 kb plasmid.		
Many muscular dystrophy patients have new ( <i>de novo</i> ) causal mutations.		

## FLY EYES

William Bateson (1861-1926) founded the discipline of modern genetics. Reginald Punnett (1875-1967) created a technique to predict the frequency of phenotypes with Mendelian inheritance, but Edith Saunders (1865-1945) noticed some combinations of traits were not inherited in a Mendelian fashion. To investigate this phenomenon, the genetics of fly (*Drosophila*) traits can be analysed. A fictional *Drosophila* species was crossed according to the following scheme:

WT flies have red-eyes (1) produced by mixing brown and cinnabar pigments.

Mutating the *white* gene gives white eyes (2).

Knocking out the *cinnabar* gene gives cinnabar eyes (3).

Knocking out the *brown* gene gives brown eyes (4).

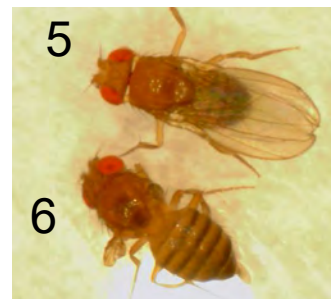
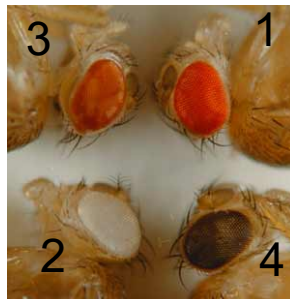
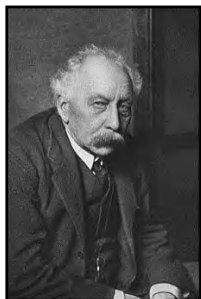
WT flies have functional wings (5), whilst mutations in the *vestigial* gene lead to vestigial wings (6).

*White* is carried on the X-chromosome. The genes *brown-cinnabar-vestigial* are carried on the same chromosome, in that order.

Males with white-eyes and normal wings are crossed to females with white-eyes and vestigial wings. All offspring (F1) are red-eyed females, or white-eyed males. No F1 flies had vestigial wings.

The F1 females are mated to a male that has white-eyes and vestigial wings. The female F2 flies from this cross are counted.

F2 (female) phenotype	Number of F2 females
White eyed, normal wings	500
Red eyed, vestigial wings	500
Red eyed, normal wings	50
White eyed, vestigial wings	50
Brown eyed, vestigial wings	5
Cinnabar eyed, normal wings	5



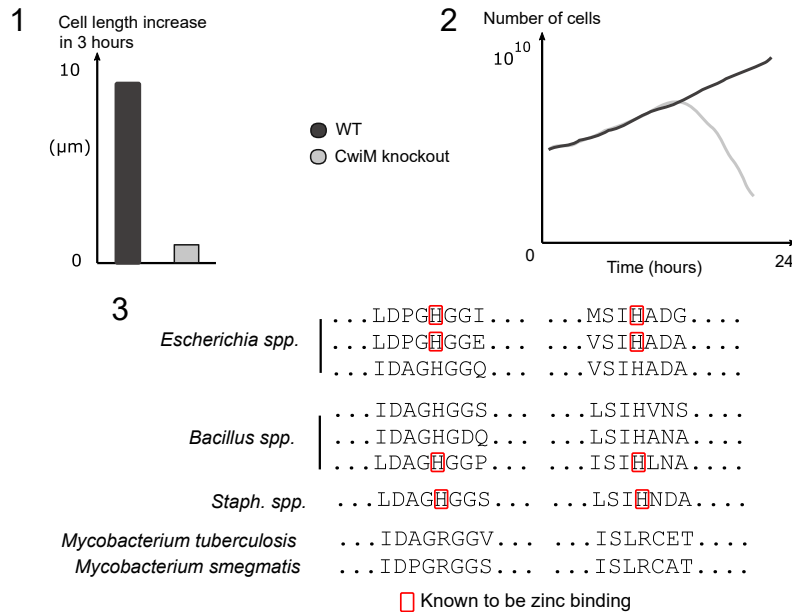
	True	False
The gene <i>vestigial</i> is on the X chromosome.	<input type="checkbox"/>	<input type="checkbox"/>
The gene <i>brown</i> is essential for making the brown pigment.	<input type="checkbox"/>	<input type="checkbox"/>
Mutations to <i>white</i> disrupt the products of both <i>cinnabar</i> and <i>brown</i> .	<input type="checkbox"/>	<input type="checkbox"/>

	0	1	5	9	10
<i>Brown</i> to <i>cinnabar</i> .	<input type="checkbox"/>	<input type="checkbox"/>	<input type="checkbox"/>	<input type="checkbox"/>	<input type="checkbox"/>
<i>Brown</i> to <i>vestigial</i> .	<input type="checkbox"/>	<input type="checkbox"/>	<input type="checkbox"/>	<input type="checkbox"/>	<input type="checkbox"/>
<i>Cinnabar</i> to <i>vestigial</i> .	<input type="checkbox"/>	<input type="checkbox"/>	<input type="checkbox"/>	<input type="checkbox"/>	<input type="checkbox"/>

# BUILDING AND GROWING

## PROTEIN EVOLUTION

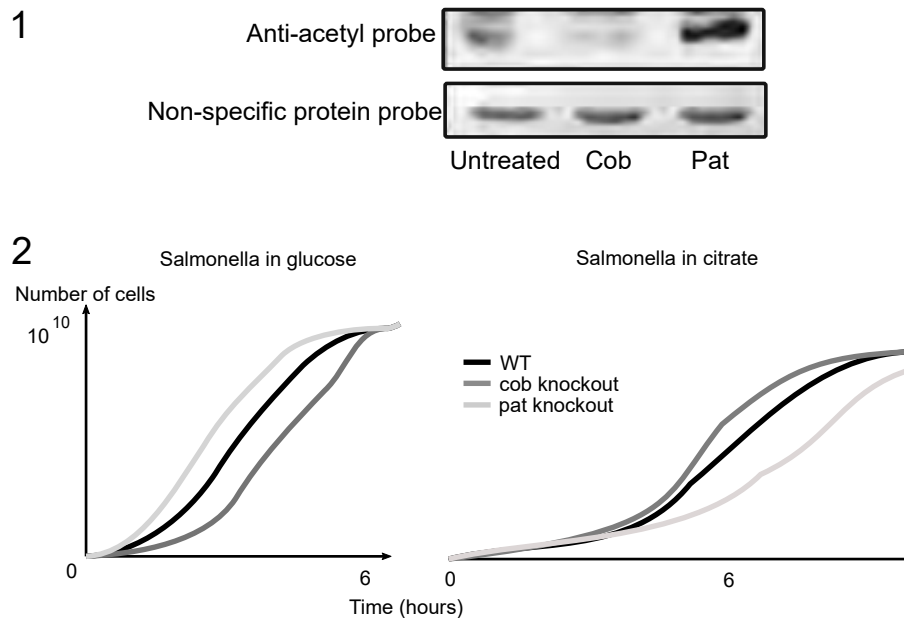
Experiments found that CwiM is a regulator of *Mycobacteria tuberculosis* cell wall formation. The length (1) and number (2) of WT and CwiM knockout cells were assessed. Amino-acid sequence similarity analysis suggests that CwiM is homologous to zinc-dependent enzymes (3).



	True	False
CwiM is likely to be zinc-dependent.		
CwiM increases cell survival rate.		
CwiM very likely plays a role in cell elongation in <i>M. smegmatis</i> .		
Cell elongation is required for survival.		

## ACETYLATION

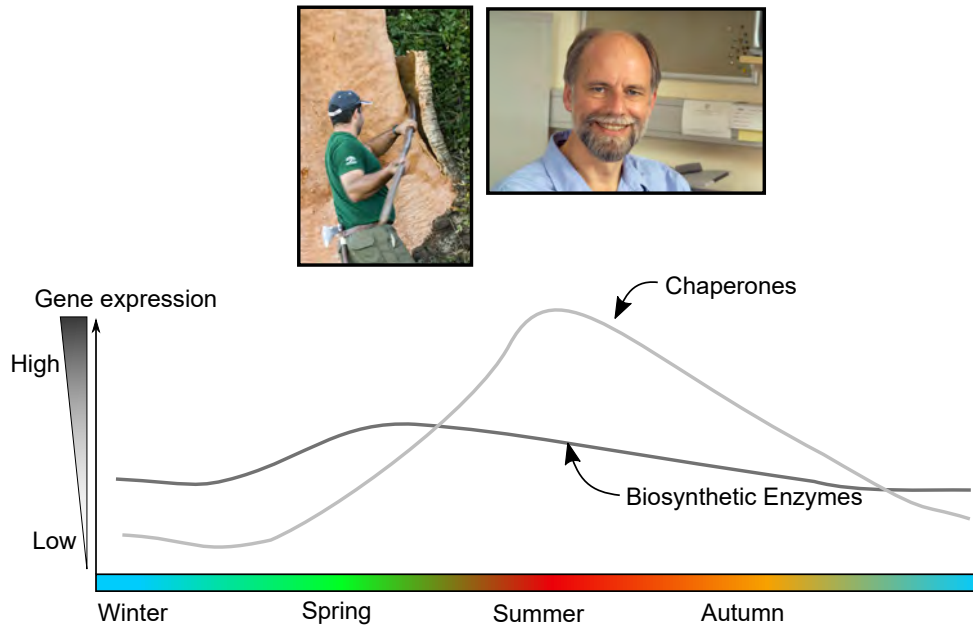
Sir Edwin Southern (1938-present) invented a method to visualise specific biomolecules, by separating them according to size, transferring them to a membrane and using specific probes for them. Protein modifications, including acetylation can be visualised in a similar way (Western blotting). WT *Salmonella* had their proteins extracted, and acetylation of a metabolic enzyme was investigated after treatment with purified enzymes pat or cob (1). The role of pat and cob in *Salmonella* growth was assessed in knockout cells (2).



	True	False
Cob adds acetyl groups to proteins.	<input type="checkbox"/>	<input type="checkbox"/>
More pat treated protein than cob treated protein was used in this analysis.	<input type="checkbox"/>	<input type="checkbox"/>
Peak growth rate is equal whether <i>Salmonella</i> are feeding on glucose or citrate.	<input type="checkbox"/>	<input type="checkbox"/>
Growth on citrate is initially slow because it takes time for cells to reduce pat activity.	<input type="checkbox"/>	<input type="checkbox"/>

## CORK

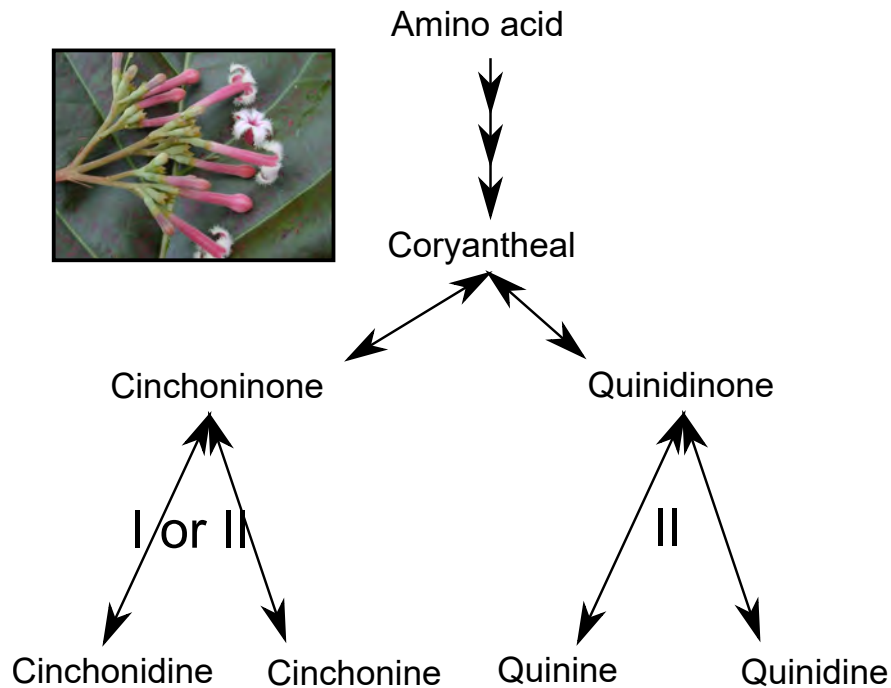
Cork oak (*Quercus suber*) produces suberin, a highly resistant material, from fatty acids, and uses it to reinforce the cell walls of cork. The expression of genes specific to cork tissue was measured across the year, and the genes were grouped into biosynthetic enzymes, or chaperone proteins. Sir Hugh Pellham (1954-present) discovered chaperones, which assist other proteins to fold properly.



	True	False
Cork tissue grows fastest in late spring.	<input type="checkbox"/>	<input type="checkbox"/>
The enzymes produce hydrophilic molecules.	<input type="checkbox"/>	<input type="checkbox"/>
Increased expression of chaperones may allow cork to continue growing, despite higher temperatures.	<input type="checkbox"/>	<input type="checkbox"/>

## QUININE BIOSYNTHESIS

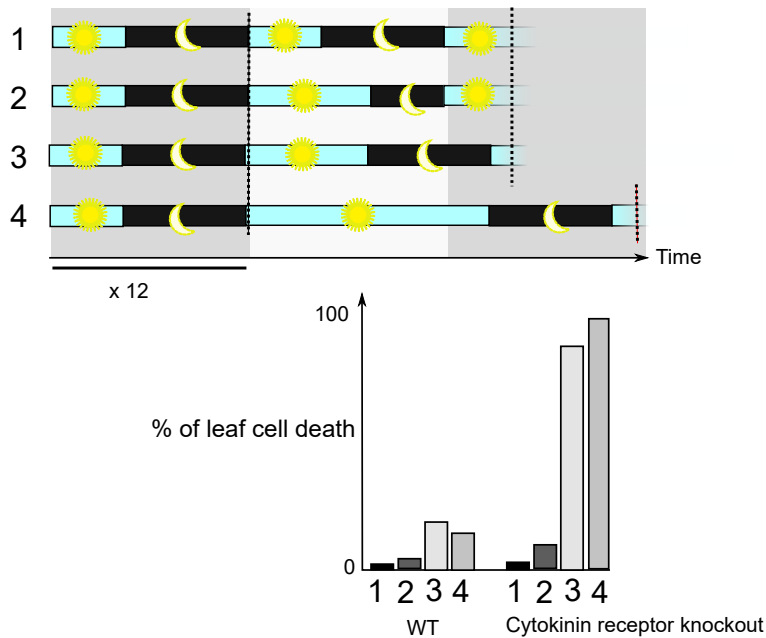
The UK has undertaken to cure 1 billion cases of neglected tropical diseases, and develop new treatments, from 2017-2022. Quinine-like drugs are useful treatments for several diseases, but their synthesis by *Cinchona* trees requires many steps. Enzymes I and II were seen to catalyse a range of substrates into a range of stereoisomers, reversibly.



	True	False
Overexpressing enzyme I may increase quinine synthesis.	<input type="checkbox"/>	<input type="checkbox"/>
Modifying enzyme II may change the ratio of quinine:quinidine in plants.	<input type="checkbox"/>	<input type="checkbox"/>
Nitrogen uptake in the roots may increase if enzyme II is overexpressed.	<input type="checkbox"/>	<input type="checkbox"/>
Trees containing the largest amount of quinine, also contain the largest amount of quinidine.	<input type="checkbox"/>	<input type="checkbox"/>

## DAY-NIGHT CYCLES

Cytokinin is a plant hormone involved in stress signalling, which may affect responses to day-night cycles. *Arabidopsis* plants were grown under 8 hours light / 16 hours dark for 12 days, then four different light / dark regimes for one cycle. Patches of cell death were measured in leaves after this.



	True	False
Increased light exposure is the major cause of cell death in cytokinin receptor knockouts in this experiment.		
A condition of 12 h light and 12 h dark will lead to a high percentage of cells dying in cytokinin receptor knockout plants.		
Cytokinin increases leaf stress.		
Cytokinin helps adjust expression of circadian clock related genes.		

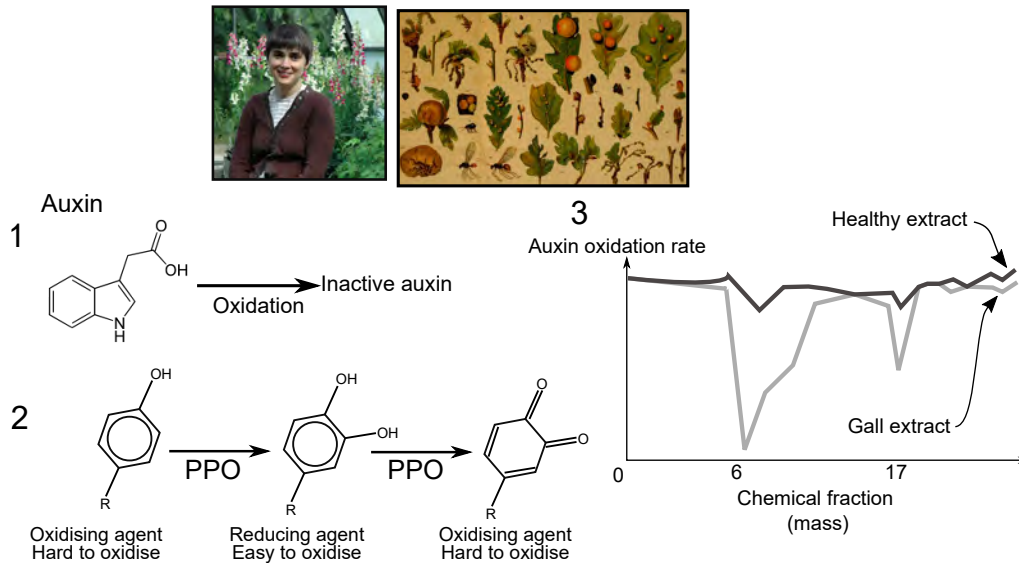


## OAK GALLS

Dame Ottoline Leyser (1965-present) showed that auxin is a plant hormone with roles in environment-development interactions. For example, English oak (*Quercus robur*) is attacked by gall wasp larvae (*Cynipidae*), which cause tumorous galls to grow.

Auxin can cause tumour growth, but auxin is degraded by oxidation (1). Plants use the enzyme PPO to control oxidation of phenolic chemicals (2), but auxin is *not* a phenolic compound.

Different chemical fractions (based on mass) were taken from galls and mixed with auxin and an oxidising agent. Auxin oxidation rate was then measured. Only fractions 6 and 17 contained mostly phenolic compounds (3).



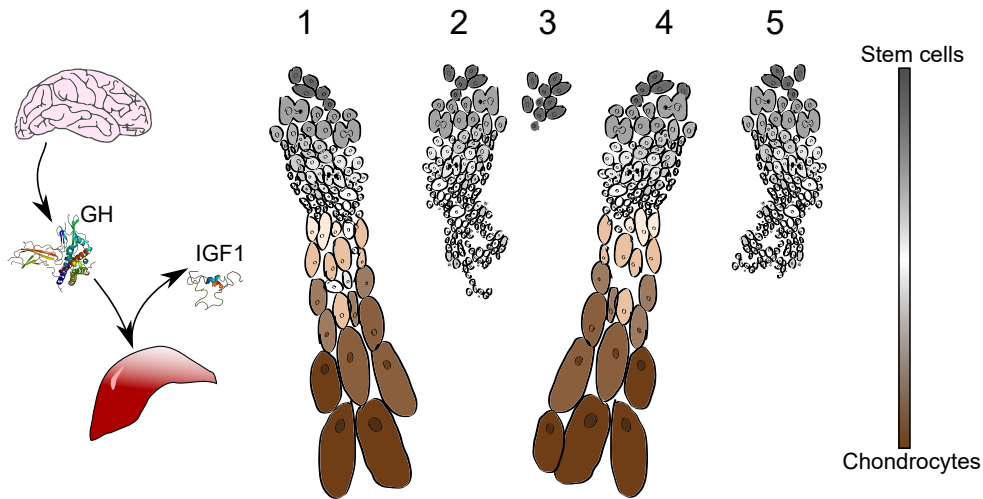
	True	False
Auxin activity is high in galls.		
Compounds in fractions 6 and 17 are oxidised more easily than auxin.		
Phenolic compounds are responsible for oxidising auxin in galls.		
Secretion of auxin-like compounds by these gall wasp larvae is necessary to drive gall formation.		
An upregulation of PPO in galls, compared to healthy tissue, could explain these results.		

## GROWTH PLATES

Growth hormone (GH) is secreted by the brain, and can stimulate the liver to secrete insulin-like growth factor 1 (IGF1).

Bones, formed from chondrocytes, elongate from terminal growth plates as animals grow.

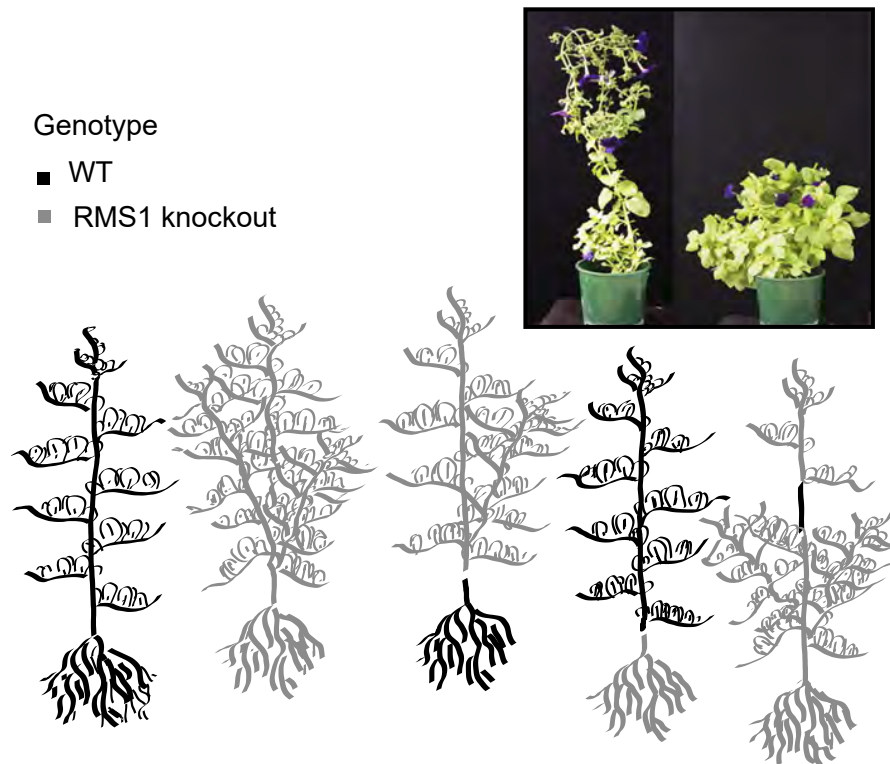
- (1) A healthy, active growth plate. All the growth plates injected with GH activated.
- (2) GH was injected into rat growth plates in combination with IGF1 inhibitors.
- (3) All GH was inhibited in a rat.
- (4) GH injected into a rat growth plate with a liver specific IGF1 knockout.
- (5) GH was added onto stem cells in a dish.



	True	False
Mutations in <i>GH</i> can lead to dwarfism.	<input type="checkbox"/>	<input type="checkbox"/>
IGF1 is necessary for chondrocytes to enlarge.	<input type="checkbox"/>	<input type="checkbox"/>
Injecting IGF1 would lead to bone elongation, even if GH is absent.	<input type="checkbox"/>	<input type="checkbox"/>
IGF1 is produced by chondrocytes, as well as the liver.	<input type="checkbox"/>	<input type="checkbox"/>

## SHOOT BRANCHING

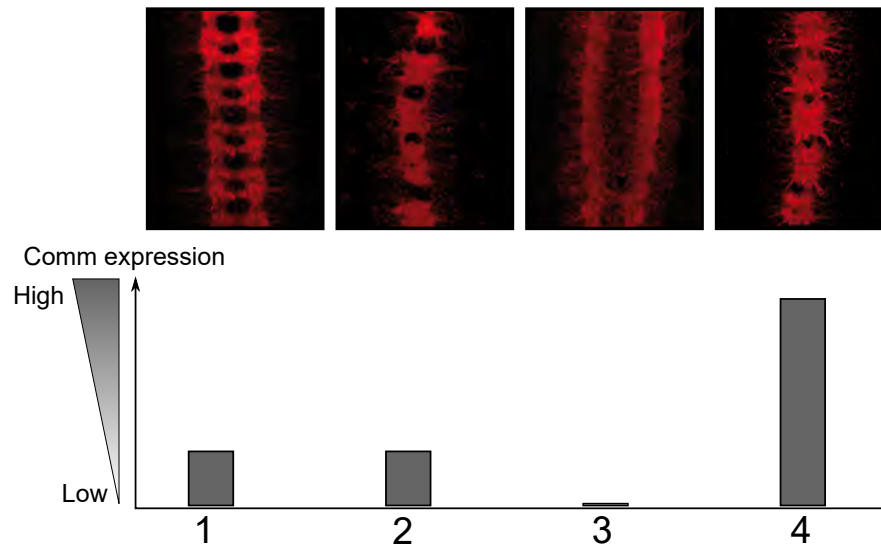
The *RMS1* gene encodes a signalling protein which is altered in modern crops. Its activity can be studied by grafting together seedlings from different plants, and monitoring their growth.



	True	False
RMS1 activity increases shoot branching.	<input type="checkbox"/>	<input type="checkbox"/>
The signal produced by <i>RMS1</i> travels towards the shoot tip rather than towards the roots.	<input type="checkbox"/>	<input type="checkbox"/>
RMS1 activity in the root is sufficient to give WT plant architecture.	<input type="checkbox"/>	<input type="checkbox"/>
RMS1 activity in the root is necessary to give WT plant architecture.	<input type="checkbox"/>	<input type="checkbox"/>

## SLIT COMM ROBO

In *Drosophila* embryos, developing neurons (red) grow along two columns parallel to the midline. Some traverse the midline and some do not, creating a ladder. Midline cells secrete a protein, called Slit, which is detected by the receptor, Robo. Comm, a transcription factor, controls Robo expression. To investigate how this guides neurons, WT (1), *Robo* knockout (2), *Comm* knockout (3), and *Comm* overexpression (4) flies were dissected.

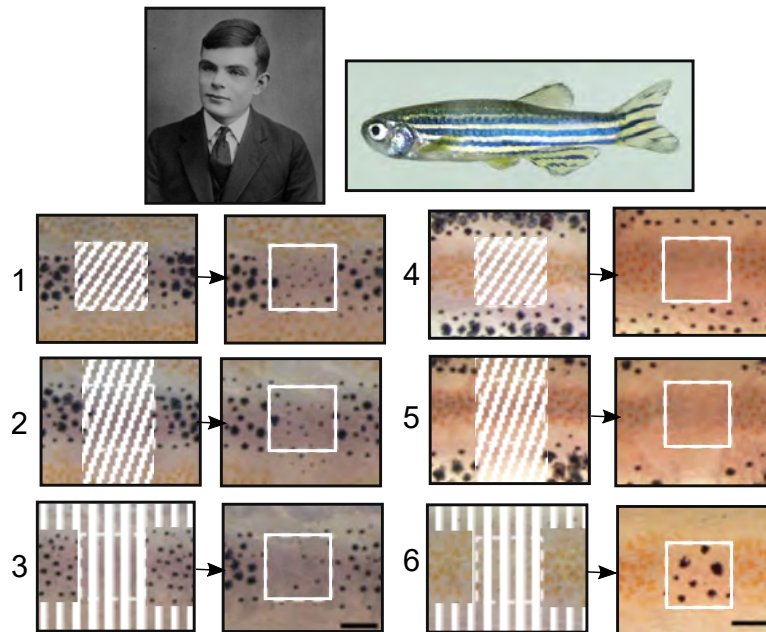


	True	False
Neurons cross the midline more often in <i>Comm</i> knockout flies, than WT flies.		
Neurons are repelled when they detect Slit.		
Comm acts to increase Robo expression.		
Neurons increase Comm expression once they cross the midline.		

## TURING PATTERNS

Alan Turing (1912-1954) famously invented the fields of computer science and artificial intelligence. Turing also published equations explaining spontaneous pattern formation in biology.

Dark zebrafish (*Danio rerio*) stripes are formed by collections of dark cells (melanophores), whilst brown stripes are produced by collections of lighter cells (xanthophores). To investigate whether zebrafish stripes are a Turing pattern, pigmented cells were surgically removed (dashed regions), and the appearance of melanophores from precursor cells was measured a fortnight later. The scale bar in the bottom right corner is 1 mm.

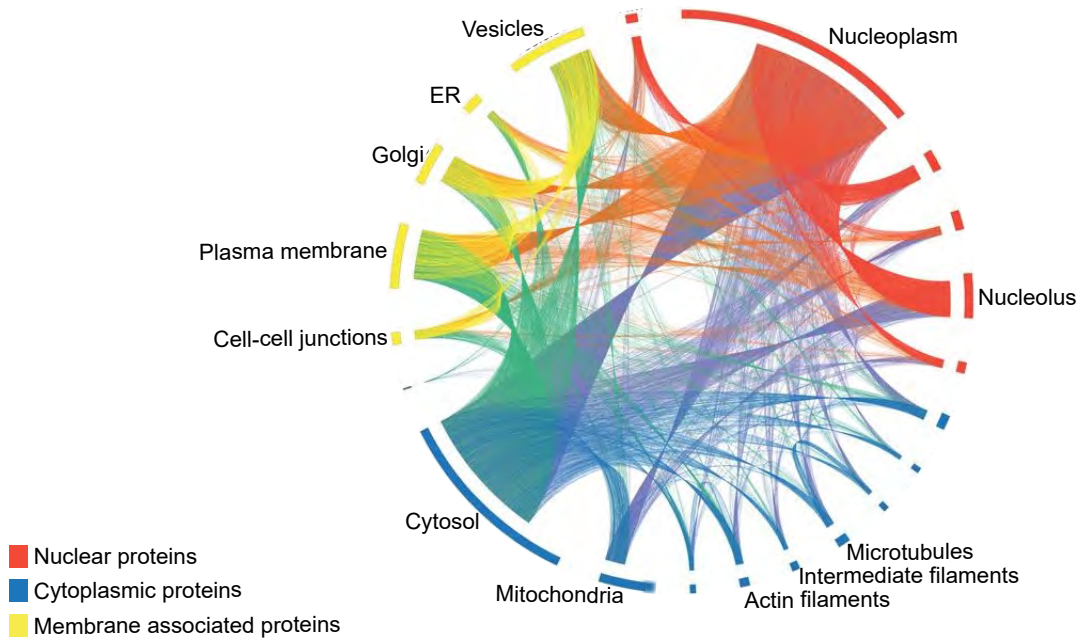


	True	False
Melanophore formation is stimulated by other melanophores immediately next to the precursor cells.	<input type="checkbox"/>	<input type="checkbox"/>
Precursor cells from different stripes are predetermined to become either melanophores or xanthophores.	<input type="checkbox"/>	<input type="checkbox"/>
Melanophore formation is stimulated by other melanophores $>0.5$ mm from the precursor cells.	<input type="checkbox"/>	<input type="checkbox"/>
Melanophore formation is stimulated by xanthophores $>0.5$ mm from the precursor cells.	<input type="checkbox"/>	<input type="checkbox"/>

# RESPONDING TO THE WORLD

## CELL PROTEIN ATLAS

The location of proteins in a cell affects their function by determining which molecules they interact with. A collaboration of scientists in Sweden and Cambridge used microscopy to map the location of >12 000 human proteins in numerous cell types. In the diagram below, solid bars around the circumference represent all the different types of protein within each organelle, and lines are drawn between the same type of protein in different organelles.



	True	False
Most proteins are found only in a single organelle.		
Most mitochondrial proteins are found only in the mitochondria.		
Most proteins that are found in multiple organelles are spread homogeneously through the cell.		

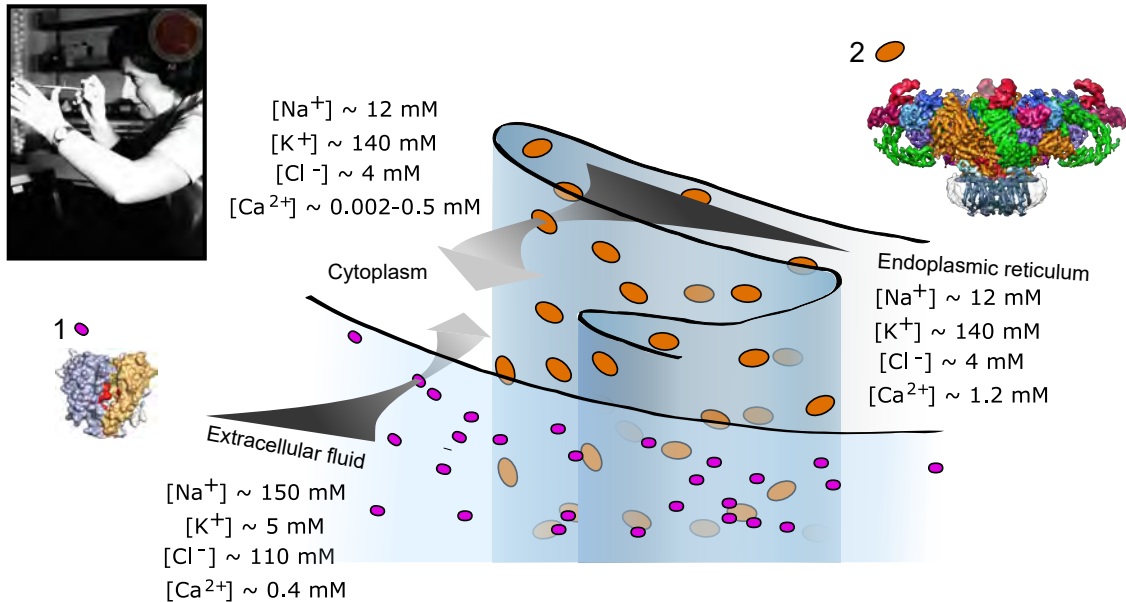
## CALCIUM SIGNALLING

Jean Hanson (1919-1973) discovered how muscles contract. Contraction is triggered by a build up of calcium in the cytoplasm, which is actively removed during relaxation. Calcium diffuses through plasma membrane channels (1), or endoplasmic reticulum membrane channels (2).

(1, purple) Plasma membrane channels, opened by depolarisation, pore width = 1 atom

(2, orange) ER channels, open by binding calcium on cytoplasmic face, pore width = 100s of atoms

The concentrations of the major biological ions in different compartments are shown.



	True	False
Peak calcium flow into the cytoplasm is greater from the intracellular than extracellular stores.		
Cytosolic calcium has to be moved against an electrical and chemical gradient to be returned to the endoplasmic reticulum.		
Muscle performance is improved by artificially expressing channel (2) on the plasma membrane.		
Peak calcium flow is greater in high frequency muscle than to low frequency muscle.		





## ACTION POTENTIAL PROPAGATION

Sir Alan Hodgkin (1914-1998) and Sir Andrew Huxley (1917-2012) explained how action potentials occur and spread.

(i) Resting neurons have a negative voltage (membrane potential) across their membrane (more negative inside than outside).

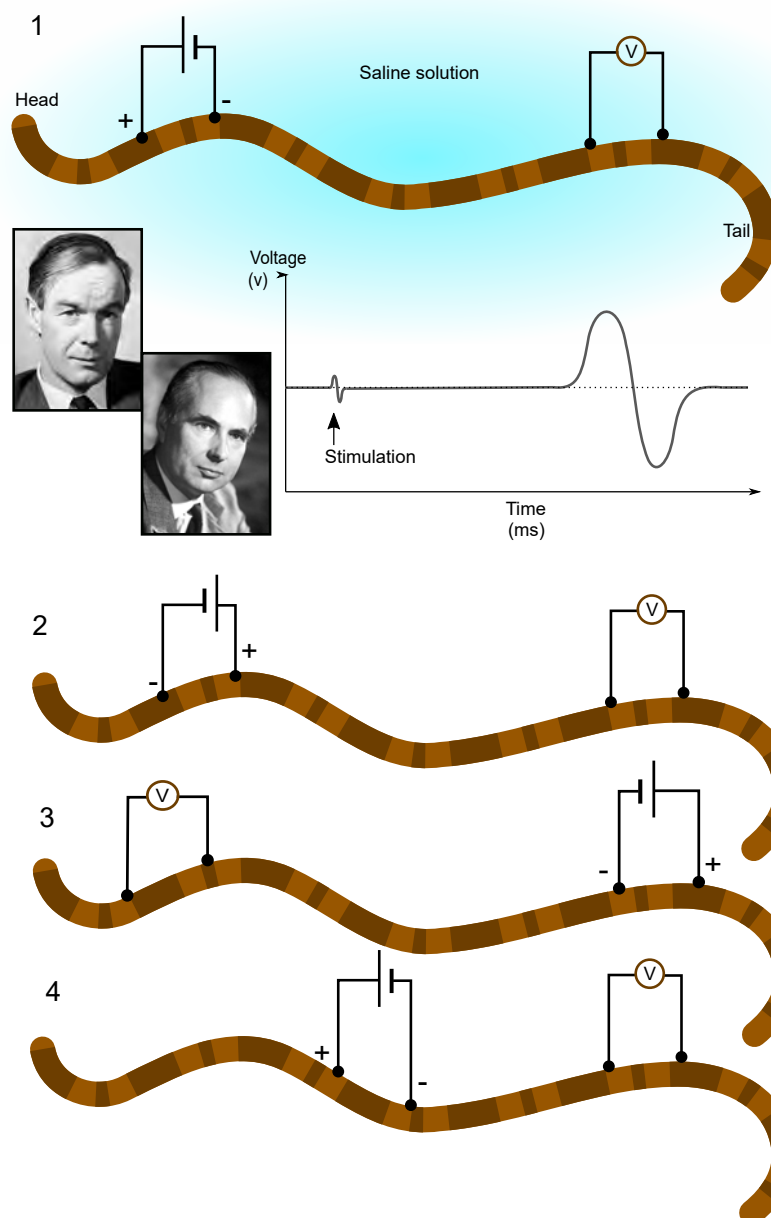
(ii) If the potential becomes less negative, ion channels open, making the voltage become positive.

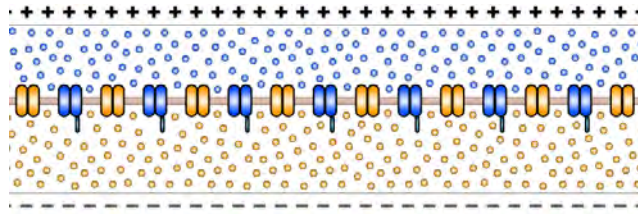
(iii) Channels shut in a time dependent fashion.

(iv) Channels cannot re-open until the membrane returns to the resting negative voltage.

(v) As one section of membrane becomes positive, electrical currents make adjacent sections less negative.

Artificial action potentials can be triggered and measured in a giant neuron which runs the length of worms. A stimulating pair of electrodes are placed close to each other, against the worm, and a voltmeter placed further along is used to record the passing action potential. The trace from setup (1) is shown. Other setups (2, 3 & 4) were also tested.



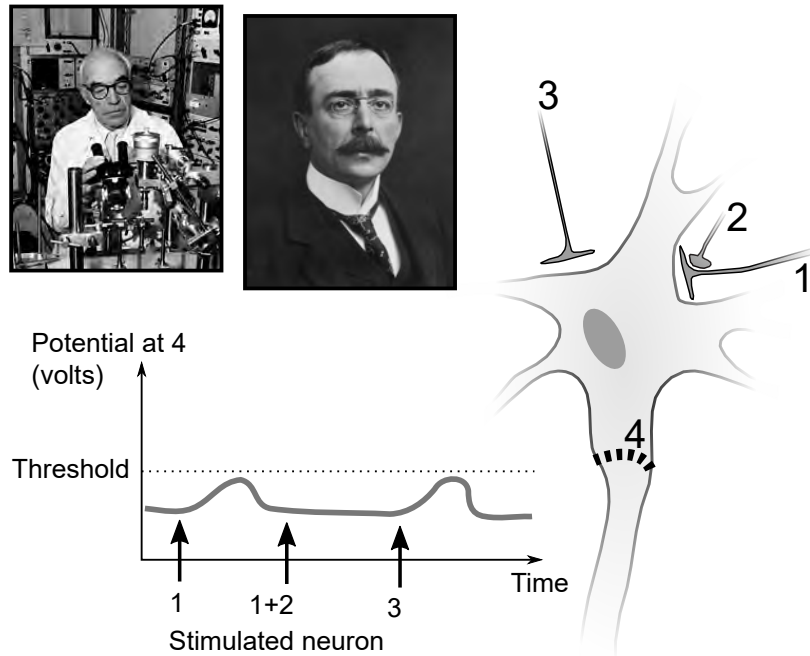


	True	False
If the voltmeter electrodes are swapped in setup (1), action potentials can still be measured.	<input type="checkbox"/>	<input type="checkbox"/>
Action potentials can still be measured in setup (2).	<input type="checkbox"/>	<input type="checkbox"/>
Action potentials can still be measured in setup (3).	<input type="checkbox"/>	<input type="checkbox"/>
Measured action potentials will have a larger magnitude (reach a higher voltage) in setup (4) than setup (1).	<input type="checkbox"/>	<input type="checkbox"/>

## SYNAPTIC INFORMATION PROCESSING

Sir John Eccles (1903-1997) and Sir Charles Sherrington (1857-1952) discovered the different roles of synapses, which dictate how neurons respond to stimulation from each other.

Neurons 1, 2 and 3 were artificially fired, and their ability to initiate an action potential at point 4 was assessed.



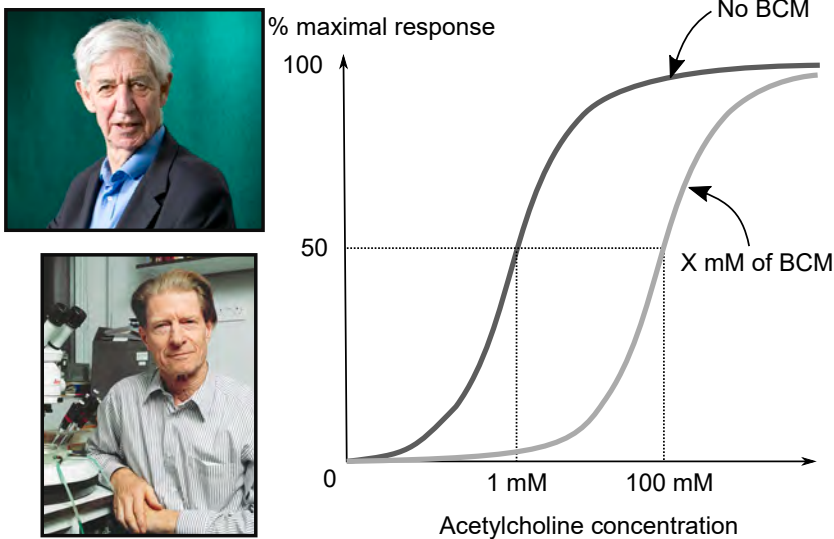
	True	False
Simultaneous stimulation from neurons (1) and (3) can fire (4).	<input type="checkbox"/>	<input type="checkbox"/>
Neuron (2) stimulates neuron (1).	<input type="checkbox"/>	<input type="checkbox"/>
The potential of (4) becomes more negative when (2) alone fires.	<input type="checkbox"/>	<input type="checkbox"/>
If (3) was fired twice in quick succession, (4) would fire.	<input type="checkbox"/>	<input type="checkbox"/>

## RECEPTOR INFORMATION PROCESSING

Whilst Lewis Wolpert (1929-present) hypothesised graded responses to signals control animal development, Sir John Gurdon (1933-present) was the first scientist to relate the number of activated receptors to different cell responses.

The neurotransmitter acetylcholine can produce a graded response, but if the inhibitor BCM is above the critical concentration ( $>X$  mM), a cell's response to acetylcholine is significantly below maximal at all acetylcholine concentrations.

Each acetylcholine receptor has one binding site for the neurotransmitter acetylcholine.

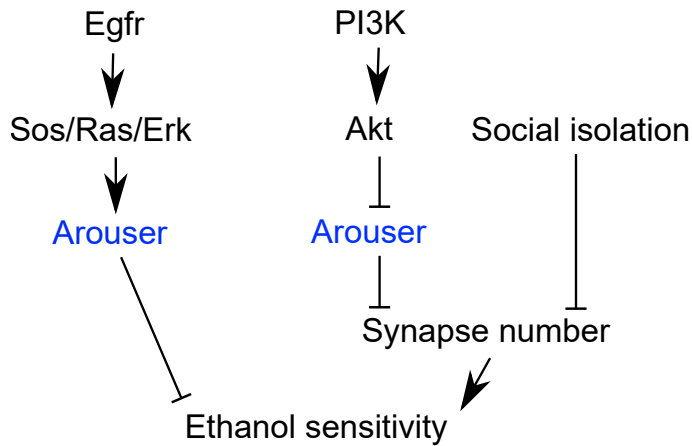


	True	False
BCM is a competitive inhibitor of the acetylcholine receptor (binds in the same way as acetylcholine).	<input type="checkbox"/>	<input type="checkbox"/>
Increasing the number of acetylcholine receptors increases cells' sensitivity to acetylcholine.	<input type="checkbox"/>	<input type="checkbox"/>
Individual receptors produce 50 % of their maximal signal when treated with 1 mM acetylcholine.	<input type="checkbox"/>	<input type="checkbox"/>

	1 %	25 %	50 %	75 %	100%
Choose the nearest proportion to the correct answer.	<input type="checkbox"/>	<input type="checkbox"/>	<input type="checkbox"/>	<input type="checkbox"/>	<input type="checkbox"/>

## DRUNK FLIES

The most important signalling pathways of development and cancer were discovered by epistasis analyses in fruit-flies (*Drosophila melanogaster*). Such screens also showed the protein encoded by the *Arouser* gene mediates signals along the Epidermal growth factor receptor (Egfr) pathway in neurons. *Arouser* knockout flies are unusually sensitive to ethanol (get drunk easily).



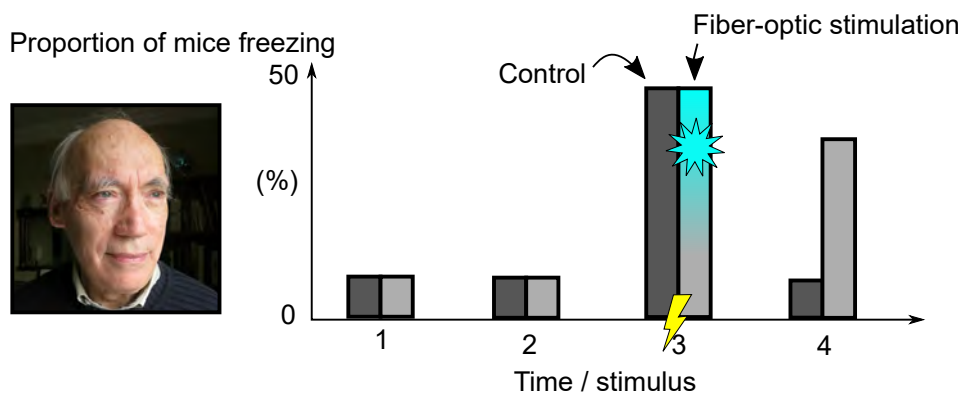
	True	False
Wild type <i>Arouser</i> facilitates alcohol tolerance.	<input type="checkbox"/>	<input type="checkbox"/>
Blocking <i>Egfr</i> activity increases alcohol sensitivity.	<input type="checkbox"/>	<input type="checkbox"/>
Over-expression of <i>Akt</i> in <i>arouser</i> knockout flies increases alcohol sensitivity.	<input type="checkbox"/>	<input type="checkbox"/>
Socially isolating <i>arouser</i> knockouts makes them more like WT flies.	<input type="checkbox"/>	<input type="checkbox"/>

## OPTOGENETICS

Tim Bliss (1940-present) discovered that stimulating a neuron sensitises it to future stimulation, and that this is a basis of long term memory. This can occur because stimulation leads to transcription of ion channel genes. One of these channels was fused to a light sensitive protein, which allows it to be activated by fiber-optic implants, and cloned into mice.

The mice were treated as follows:

- (1) Transcription of this channel was blocked in every cell, until adult mice were first shown a particular, non-threatening stimulus.
- (2) Transcription of this channel was re-blocked in every cell.
- (3) Mice were given an electric shock, causing them to freeze. In a subset of mice, electrocution was accompanied by a flash of fiber optic light to the brain.
- (4) Mice were shown the non-threatening stimulus again.



	True	False
The freezing behaviour in (4) is explained by mice forming an association between flashing lights and electrocution.	<input type="checkbox"/>	<input type="checkbox"/>
The same neurons are activated by electric shock and fiber optic lights.	<input type="checkbox"/>	<input type="checkbox"/>
Flashed mice have a false memory of the non-threatening stimulus.	<input type="checkbox"/>	<input type="checkbox"/>
Control mice are likely to freeze if they are shown the electric shock apparatus after the experiment.	<input type="checkbox"/>	<input type="checkbox"/>

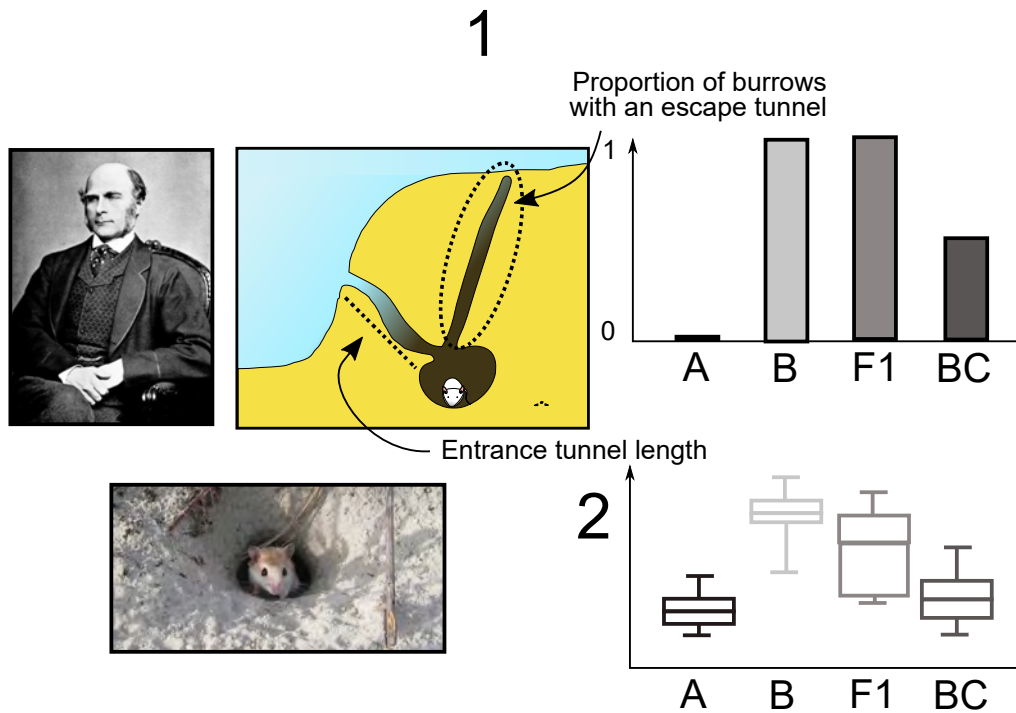
## BURROWING MICE

Sir Francis Galton (1822-1911) invented the field of behavioural genetics.

Burrowing mouse (*Juscelinomys*) burrows have quantifiable features, including presence or absence of an escape tunnel (1) and length of the entrance tunnel (2).

Species A and Species B were crossed. The first generation of the cross (F1), were back-crossed (BC) with Species A.

In BC mice, there is no correlation between entrance tunnel length and the presence or absence of an escape tunnel.

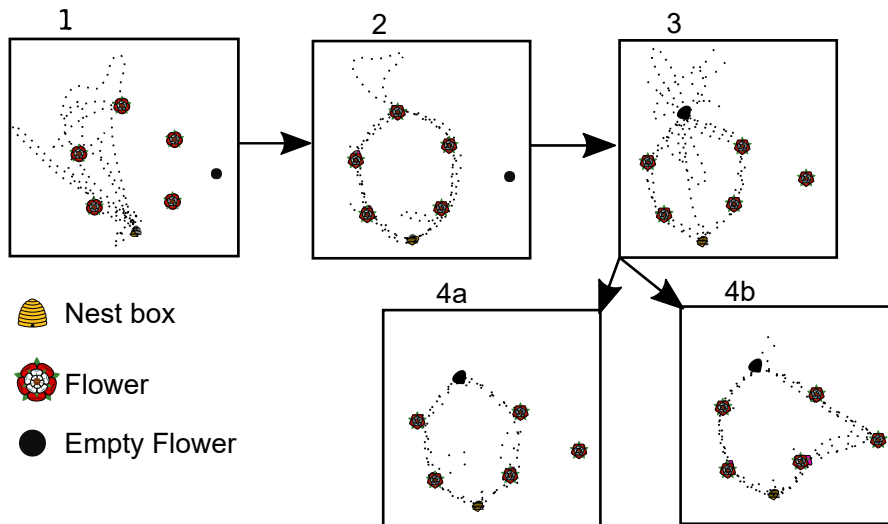


	True	False
Entrance tunnel length is determined by a single locus (gene).	<input type="checkbox"/>	<input type="checkbox"/>
Alleles for the presence of an escape tunnel are dominant to those for absence of an escape tunnel.	<input type="checkbox"/>	<input type="checkbox"/>
F1 hybrids can be distinguished from Species A and Species B by looking at their burrows.	<input type="checkbox"/>	<input type="checkbox"/>
Genes determining entrance tunnel length and the presence or absence of escape tunnels are close to each other in the genome.	<input type="checkbox"/>	<input type="checkbox"/>

## TRAVELLING SALES-BEES

Radar, invented in the UK, was used to track the flight of English bees (*Apis mellifera*). To investigate how bees forage, the following experiment was performed:

- (1) Fake flowers were filled with syrup, and the bees were released from a nest-box.
- (2) Bees were given time to build experience of the setup.
- (3) Syrup was removed from one flower, leaving it empty, and placed in another.
- (4) Bees were allowed to build experience of the new set up. Representative flights are shown (a & b).

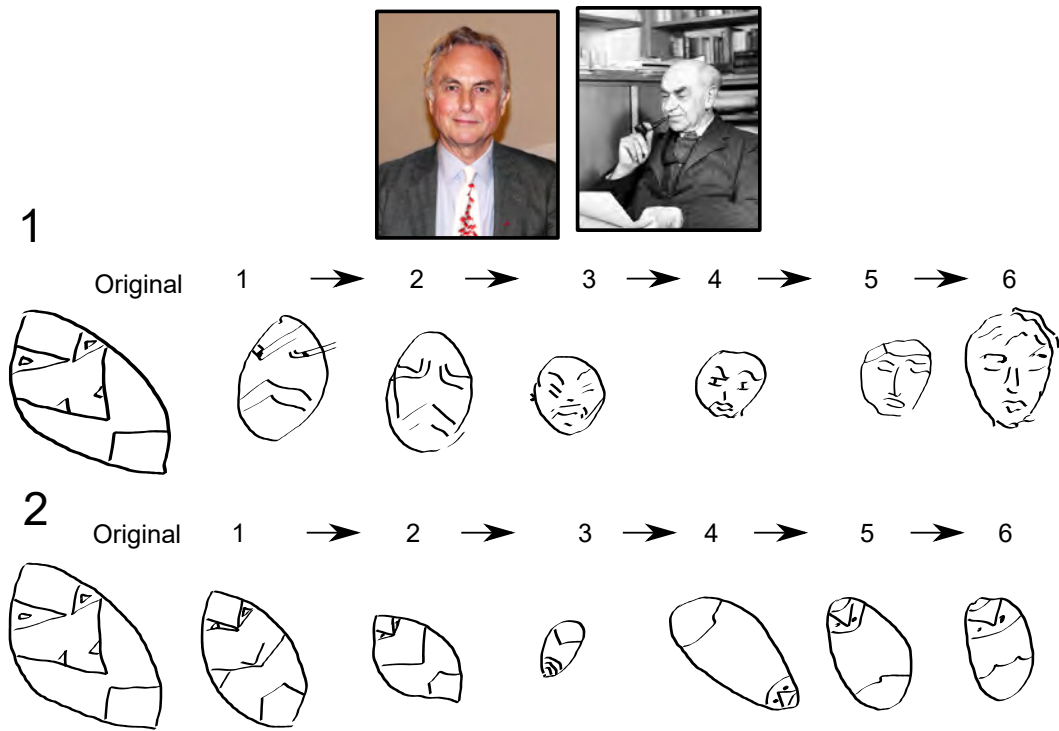


	True	False
Bees continually attempt to optimise the shortest route to harvest syrup from the flowers.		
Experienced bees do not search for new flowers unless the environment changes.		
Bees exhibit signs of confusion if they encounter unexpected features on their route.		
Bees visit all the nutritious flowers within range of their nest.		



# MEMES

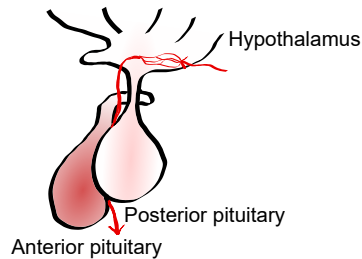
Richard Dawkins (1941-present) invented the idea of memes, and Sir Frederic Bartlett (1886-1969) showed previous knowledge alters the processing of new stimuli. Bartlett asked British people to reproduce a drawing of Native American masks from memory. This was passed to a new person to memorise and reproduce, and the reproduction passed on, several times in succession (1). This study has been repeated recently (2). Representative reproductions are shown.



	Experiment (1)	Experiment (2)
Memories tended to simplify the original object.		
Objects tended to be remembered as more similar to familiar objects than is actually the case.		
The participants of the study were instructed to focus on making accurate reproductions.		
Memories included features not present on the actual object.		

# THE PITUITARY GLAND

The hypothalamus is the central regulator of homeostasis, whilst diverse hormones from the posterior and anterior pituitary glands orchestrate most bodily functions. To investigate how these three structures coordinate their actions in rats (*Rattus norvegicus*), each was electrically stimulated, and the effect on hormone secretion from both pituitary glands was observed (1). Secondly, whole rat pituitary glands were transplanted to locations with different blood supplies, to reveal why they usually receive blood from hypothalamic veins (2).

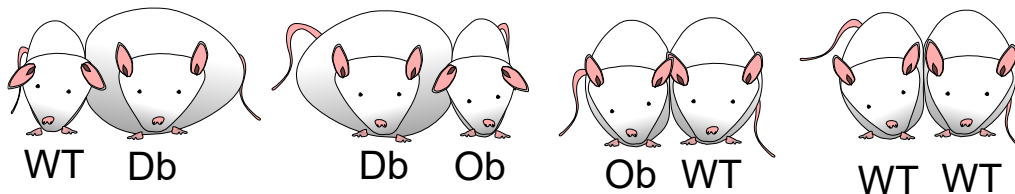
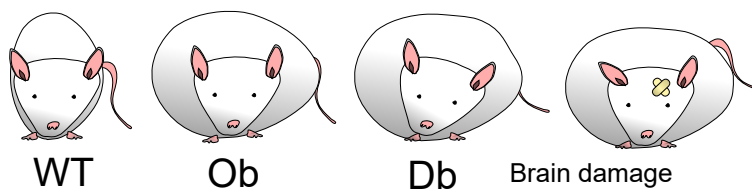


		Secretes hormones?	
		Posterior	Anterior
1	Hypothalamus	+	+
	Electrical stimulation Posterior	+	-
	Anterior	-	-
		Secretes hormones?	
		Posterior	Anterior
2	Hypothalamic	-	+
	Blood supply Non-hypothalamic	-	-
	Temporarily non-hypothalamic, hypothalamic supply restored	-	+

	True	False
The hypothalamus controls secretion of hormones from both pituitary glands.		
Hypothalamic blood specifically has factors necessary for the survival of the anterior pituitary.		
Hypothalamic neurons innervate the posterior pituitary.		
Hypothalamic hormones cause the posterior pituitary to secrete hormones.		

## OBESE MICE

Sir Frederick Banting (1891-1941) and John Macleod (1876-1935) discovered insulin and invented modern diabetes treatment. This inspired similar investigations into body weight homeostasis and obesity: two mouse (*Mus musculus*) lines (obese; Ob, & diabetic; Db) have identical over-eating phenotypes. Each is deficient for a single, but different, gene. Damaging the arcuate nucleus in the brain, which is the structure solely responsible for regulating the sensation hunger, produces a similar phenotype. Mice were joined surgically, allowing a small amount of blood to flow between them, and then observed.

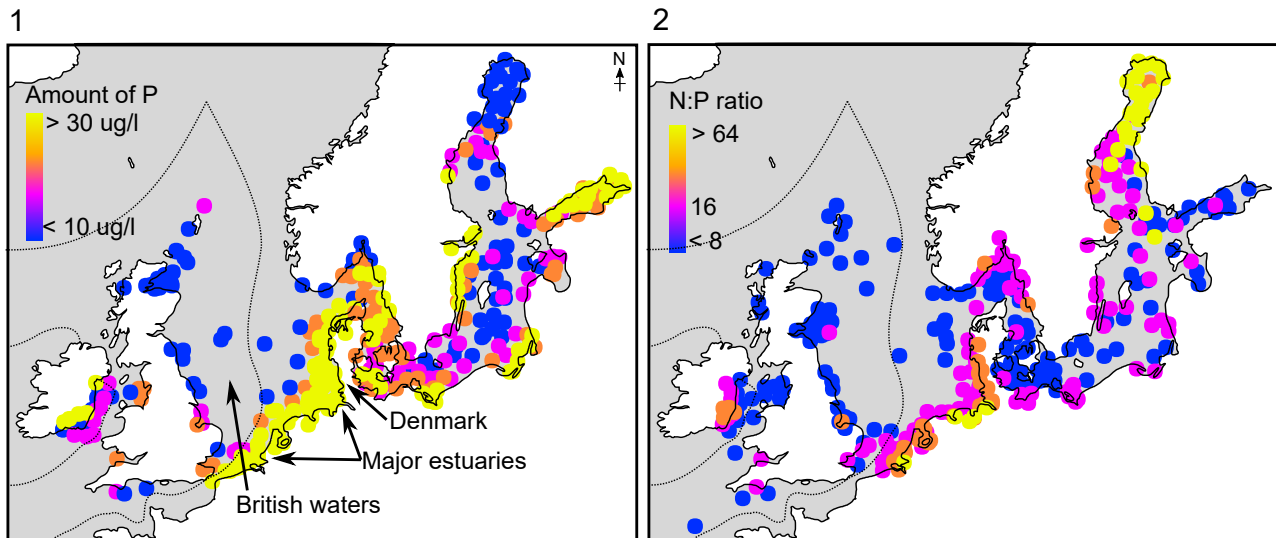


	True	False
Surgical connection allows mice to freely share nutrients.	<input type="checkbox"/>	<input type="checkbox"/>
Db mutants overproduce an appetite suppressing substance.	<input type="checkbox"/>	<input type="checkbox"/>
The products of genes Ob and Db act in the same pathway.	<input type="checkbox"/>	<input type="checkbox"/>
The WT product of gene Ob promotes a pathway which activates the arcuate nucleus.	<input type="checkbox"/>	<input type="checkbox"/>
Some cases of human obesity can be treated by administering a hormone.	<input type="checkbox"/>	<input type="checkbox"/>

# SHARING THE WORLD

## EUTROPHICATION

The use of fertilisers, and release of sewage, have altered the balance of nitrogen and phosphorus based nutrients in the environment. Additionally, nitrogen oxides from pollution dissolve in rain to form acids. Growing algae incorporates an average of 16 nitrogen atoms per phosphorus atom, and eutrophication occurs when algal decomposition depletes oxygen. In 1957, the River Thames was declared 'biologically dead', without oxygen, but is now among the world's healthiest major rivers. Phosphorus availability (1), and nitrogen:phosphorus molar ratio (2) was measured across Northern Europe.



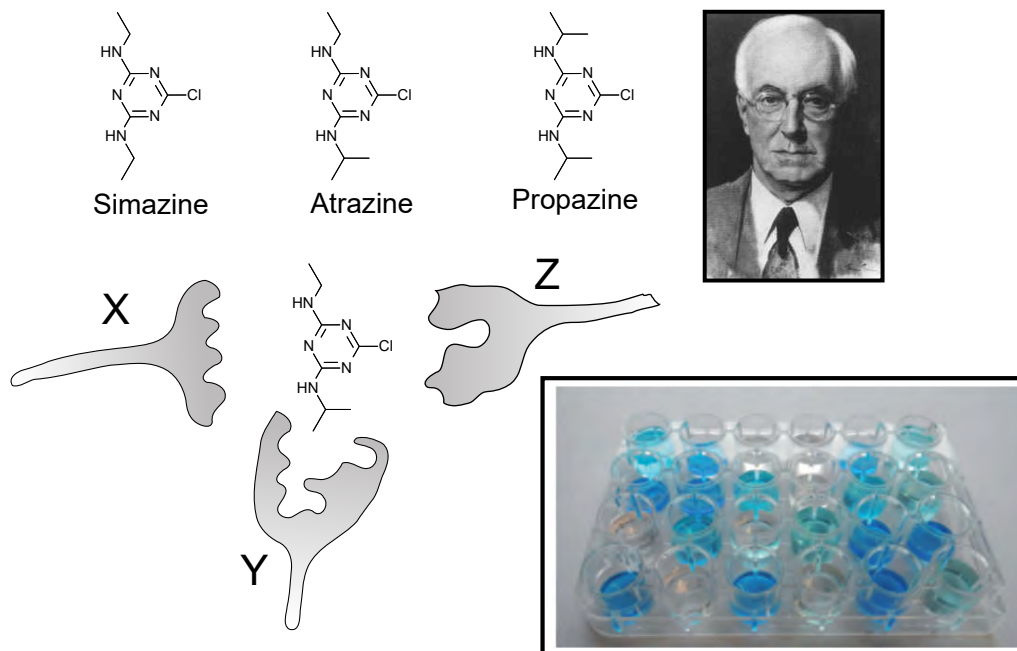
	True	False
The risk of eutrophication would be much lower if European farmers reduce phosphate, but not nitrogen, fertiliser use.		
Nitrogen oxide pollution increases the risk of eutrophication around Great Britain.		
Based on nutrient levels, British waters contain most of Europe's large, energetic fish species.		
European rivers are more polluted with phosphate than nitrogen.		
Nutrient levels allow algae to grow quicker along the East coast of Denmark, than the West.		

## ELISA

John Marrack (1886-1976) discovered the biochemistry of antibody-antigen interactions. These can be harnessed to detect pesticides contaminating sample water:

- 1) Wells are coated in the pesticide.
- 2) A very small amount of antibody against the pesticide is mixed with sample water, and then the mix is transferred to the wells.
- 3) The wells are washed with clean water several times.
- 4) An enzyme that produces a blue pigment, which is attached to a secondary antibody that binds the first antibody, is added.

Different antibodies (X, Y & Z) can be used for this process.



	True	False
To test for atrazine specifically, antibody Y should be used.	<input type="checkbox"/>	<input type="checkbox"/>
All these pesticides probably have the same mechanism of action.	<input type="checkbox"/>	<input type="checkbox"/>
All these antibodies could come from the same mouse injected with atrazine.	<input type="checkbox"/>	<input type="checkbox"/>
Darker blue wells contained water which was more contaminated with pesticide.	<input type="checkbox"/>	<input type="checkbox"/>

# MADAGASCAR

The Royal Botanic Gardens, Kew, is responsible for the millennium seed bank, including archiving the 70% of Madagascan plant species that are threatened with extinction. The shape of a plant phylogeny can be used to prioritise species for conservation.

The tree fern (*Cyatheales*) phylogeny is typical of plants (1).

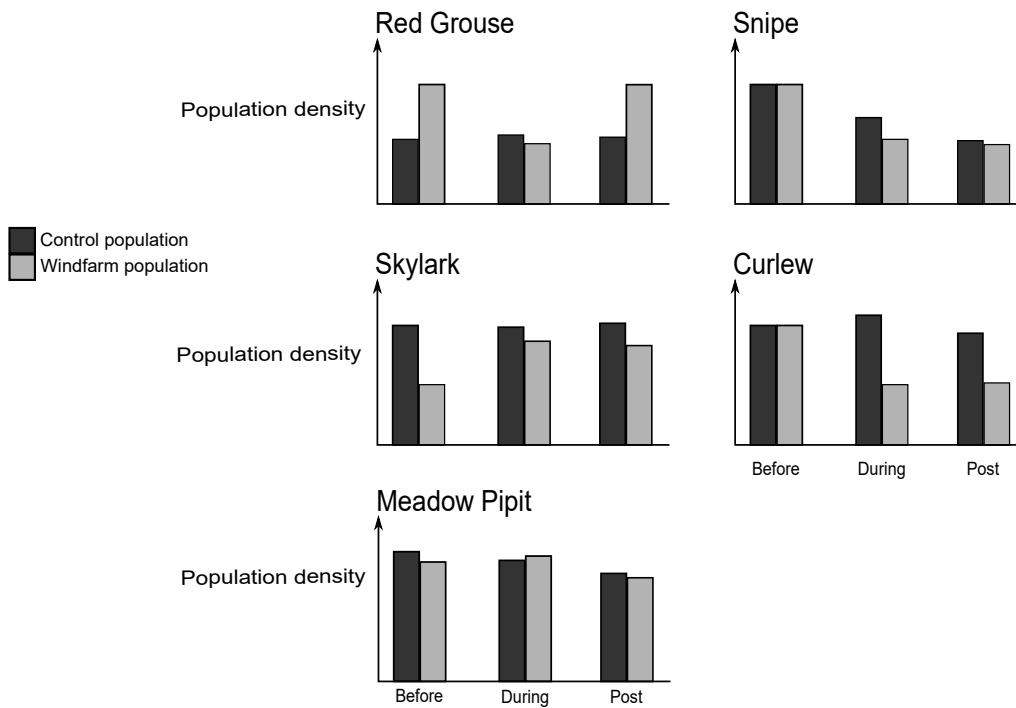
The chance of plants being at risk of extinction is related to the age of the species (the length of its branch on a phylogeny) (2).



	True	False
The vast majority of Madagascan species are likely found nowhere else.	<input type="checkbox"/>	<input type="checkbox"/>
The age of Madagascan species accounts for their unusually high extinction risk categorisations.	<input type="checkbox"/>	<input type="checkbox"/>
Globally, Kew should focus on collecting seeds from old species.	<input type="checkbox"/>	<input type="checkbox"/>
Failure to bank any Madagascan species will result in a greater loss of evolutionary history and genetic diversity than failure to bank African species.	<input type="checkbox"/>	<input type="checkbox"/>

## WINDFARMS

The UK is extending the world’s largest offshore windfarm in the North Sea. However, disruption to wind patterns, and other effects, causes difficulties for birds. Several windfarms were previously built in the habitats of red grouse (*Lagopus lagopus scotica*), snipe (*Gallinago gallinago*), skylark (*Alauda arvensis*), curlew (*Numenius sp.*), and meadow pipit (*Anthus pratensis*). The population density of these species was compared to undisturbed habitats before, during and after windfarm construction.

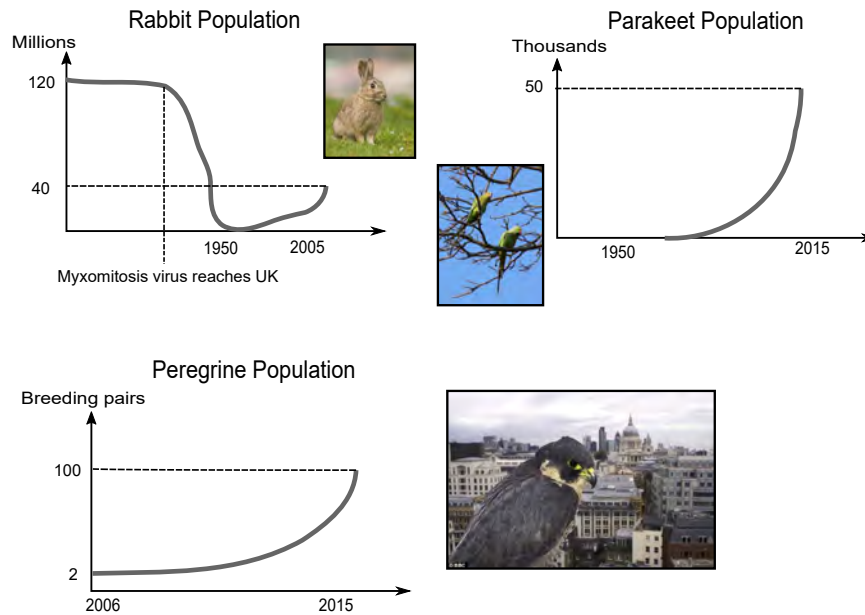


	True	False
The process of windfarm construction reduces the red grouse population.	<input type="checkbox"/>	<input type="checkbox"/>
Of the species studied, finished windmills are only dangerous to curlews.	<input type="checkbox"/>	<input type="checkbox"/>
The study windfarm is located in better red grouse habitat than the control site.	<input type="checkbox"/>	<input type="checkbox"/>
An environmental change, other than windfarm construction, is harming the snipe population.	<input type="checkbox"/>	<input type="checkbox"/>

# POPULATIONS

The world's longest conservation efforts have restored the populations of many native British species, but several aliens are also thriving.

- (1) Rabbits (*Oryctolagus cuniculus*) were introduced to Great Britain ~ 2000 years ago by the Romans.
- (2) A pair of Parakeets (*Psittacula krameri*) was released into London by Jimi Hendrix.
- (3) Native Peregrine Falcons (*Falco peregrinus*) nest in London, which as Europe's largest city, provides ample nest sites and prey, including parakeets.

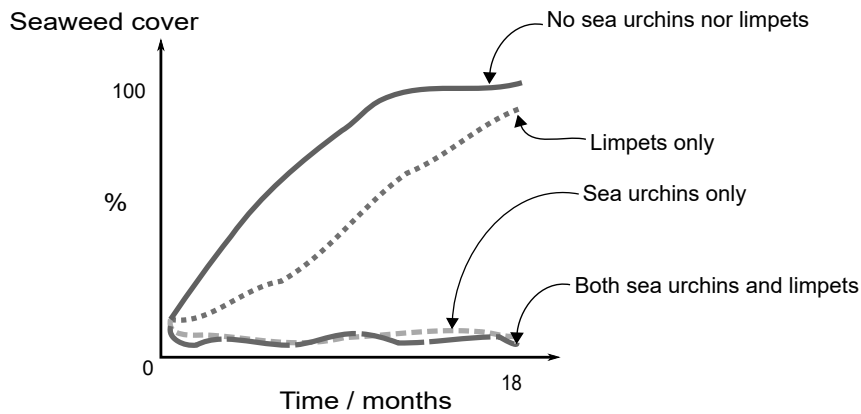


	True	False
Myxomatosis resistance in British rabbits arose around 1950.	<input type="checkbox"/>	<input type="checkbox"/>
Peregrine falcons are effective biocontrols for the parakeet population.	<input type="checkbox"/>	<input type="checkbox"/>
Removing rabbits from the UK would help conservation of native species such as Peregrines.	<input type="checkbox"/>	<input type="checkbox"/>



## SEA URCHINS

Sea urchins (*Echinoidea*) are a major food source of otters (*Enhydra lutris*). Sea urchin populations tend to explode where sea beds have been damaged by human activities. Sea urchins, limpets (*Patella vulgata*) and seaweeds can live together. Seaweed coverage was measured in an experimental area where the populations of urchins and limpets was artificially controlled.



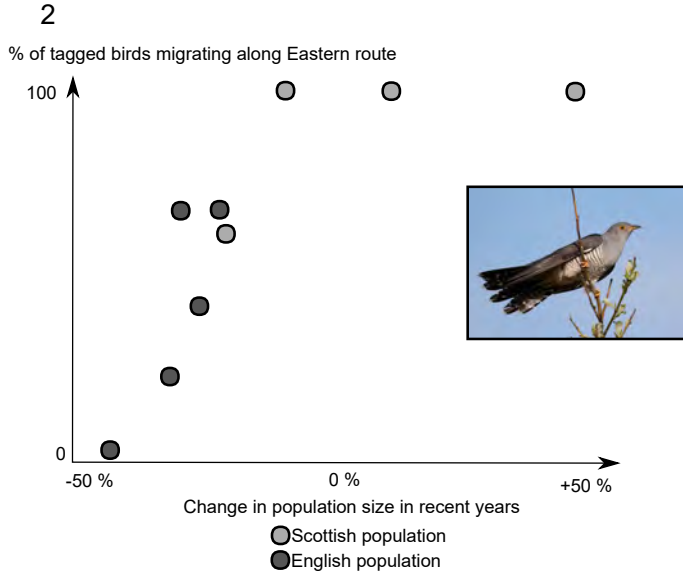
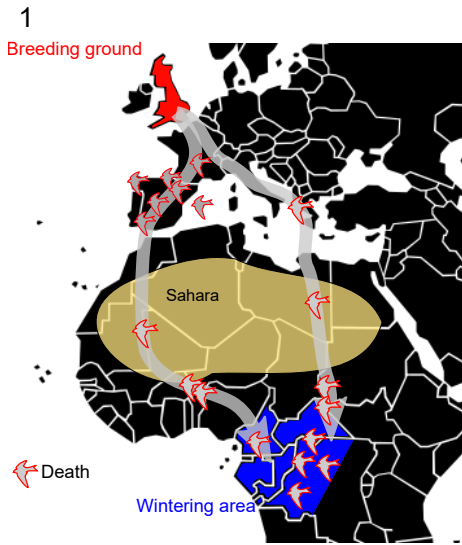
	True	False
Limpets affect seaweed growth when sea urchins are present.		
Sea urchins have a bigger effect on seaweed than limpets have on seaweed.		
Sea urchins help damaged seabeds recover.		
Increasing the number of otters increases ocean primary productivity.		

# CUCKOOS

The Island of Great Britain is a critical hub for migrating birds, from as far away as Canada and South Africa, due to its mild climate and well preserved habitats.

Cuckoos (*Cuculus canorus*) are one migratory species which has seen its population decline in recent years. Therefore, many cuckoos had trackers attached to them, and were monitored over several years. Their Autumn migration routes are shown (1). A roughly equal number of birds took the Eastern and Western routes through Africa. Points at which tracked birds died are shown.

The change in cuckoo populations in different regions of Great Britain, and the migration route which these populations take are shown (2).



	True	False
Conditions for birds migrating along the western route have changed in recent years.		
Crossing the Sahara desert is the biggest challenge for migrating cuckoos.		
Mortality rates during migration have an important impact on the population sizes of cuckoos in different parts of Britain.		
These data would be consistent with Summer conditions within Britain, before migration begins, determining mortality rates during migration.		

## WILDCATS

Lynx (*Lynx lynx*) may be reintroduced to Great Britain in 2017, after being hunted to extinction 1300 years ago. Scottish wildcats (*Felis silvestris grampia*) are Britain's only remaining endogenous cat species, and are distinguished from wildcats (*Felis silvestris silvestris*) by their larger size, thicker fur, and unique hunting technique. Feral domestic cats (*Felis silvestris catus*) are also present in Scotland.

Motion-sensitive cameras in 347 Scottish locations captured 200 000 images, and volunteers used these to identify wildcats, feral cats, and hybrid cats by their markings.

In one year they found 10 different Scottish wildcats. In the next year, they found 9 different Scottish wildcats, one of which had the same markings as a cat photographed in the preceding year.

Additionally, they estimated that there were about 500 feral cats, and 300 hybrid cats in the area.



	50	100	150	200	250
Choose the nearest number to the correct estimate.					

	True	False
Neutering feral cats would help prevent the Scottish wildcat population becoming less fit over time.		
Vaccinating feral cats would be an effective way to prevent transmissible disease in Scottish wildcats.		
Two species which have coexisted in the same region for thousands of years, are more likely to interbreed than two species which have recently come into contact but are equally genetically divergent.		

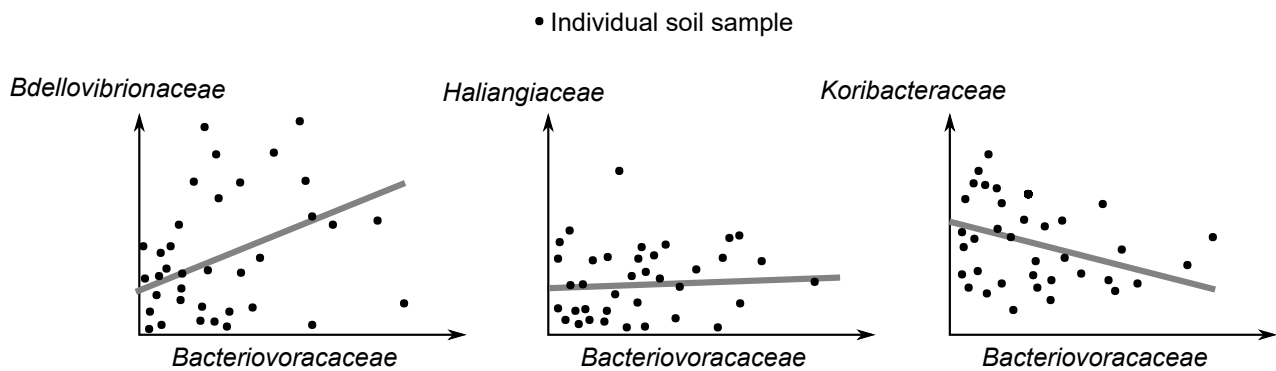
## SOIL BACTERIA

Sequencing of ribosomal RNA genes (rDNA), which have very low diversity within families, reveals the identity and relative abundance of bacterial families in different soils.

*Bacteriovoracaceae* and *Bdellovibrionaceae* are predatory bacteria. Each has a different maximum growth rate in optimal conditions.

*Haliangiaceae* and *Koribacteraceae* are non-predatory.

### Relative abundance of families' rDNA



	True	False
<i>Bdellovibrionaceae</i> and <i>Bacteriovoracaceae</i> occupy different niches.	<input type="checkbox"/>	<input type="checkbox"/>
<i>Bacteriovoracaceae</i> is an important predator of <i>Haliangiaceae</i> .	<input type="checkbox"/>	<input type="checkbox"/>
<i>Bacteriovoracaceae</i> and <i>Koribacteraceae</i> might occupy different habitats.	<input type="checkbox"/>	<input type="checkbox"/>
rDNA sequencing could be used to assess the abundance of individual <i>Bacteriovoracaceae</i> species.	<input type="checkbox"/>	<input type="checkbox"/>

## HAPLOTYPE NETWORK

A haplotype network shows the evolutionary relatedness of haplotypes, and the proportion of individuals from a specific population with each haplotype. The 1000 genomes project, coordinated by the European Bioinformatics Institute in England, allows a global human haplotype network to be produced.

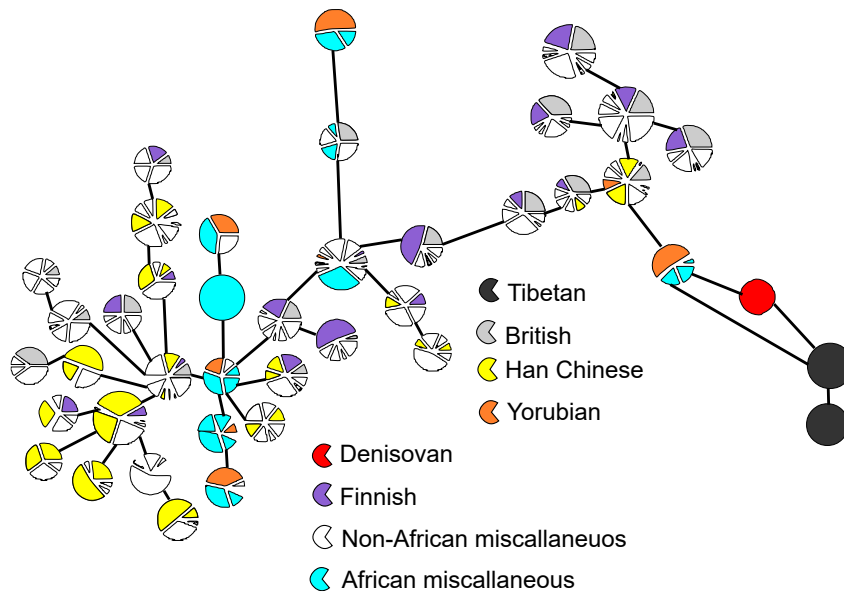
The circles represent one haplotype, each from the same locus.

The colours represent different populations by geographic location.

The lines represent an evolutionary link between two haplotypes.

Denisovans are a non-human subspecies of the genus *Homo*.

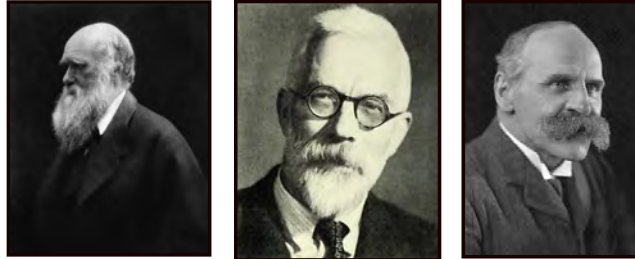
Tibetans are an Asian population, closely related to their neighbours across most of their genome.



	True	False
The British are more related to the Finnish than the British are to Yorubians at this locus.		
Tibetans have a higher genetic diversity than Han Chinese at this locus.		
The Yorubian people are found in Africa.		
Tibetan ancestors interbred with Denisovans after leaving Africa.		

## EVOLUTIONARY GENETICS

Charles Darwin's (1809-1882) discovery was united with Mendelian genetics by Sir Ronald Fisher (1890-1962) and John Haldane (1892-1964). Equations then allowed biologists to predict evolution, including the evolution of complex traits like behaviour, and quantitative traits like height.



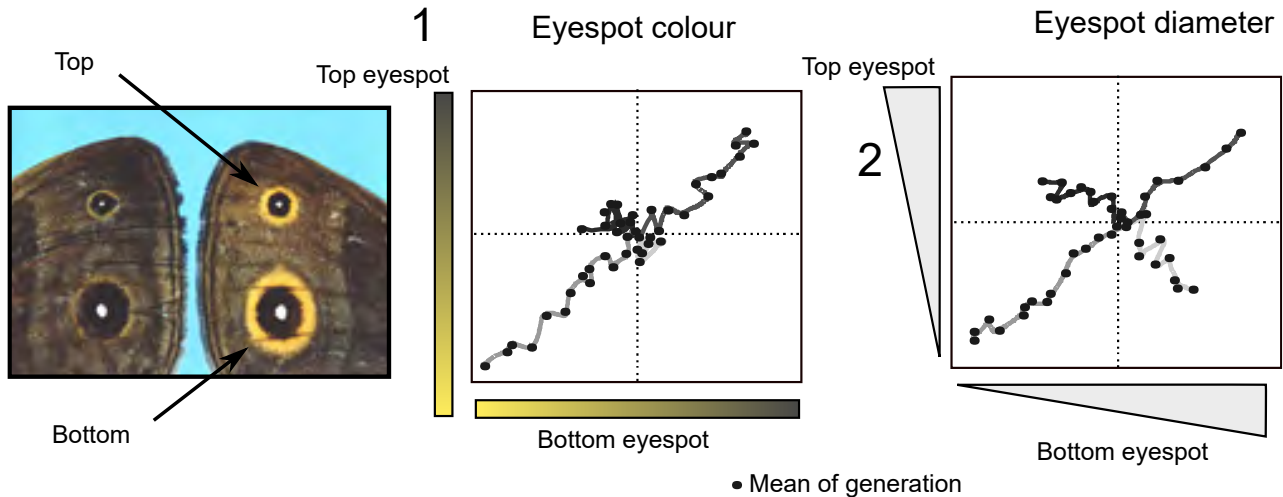
Symbol	Definition
$r$	The relatedness of two individuals
$n_i$	The number of alleles the two related individuals share
$n_p$	The number of alleles shared on average between two members of the population
$N_t$	The total number of alleles in the genome
$w$	Inclusive fitness
$D$	Direct fitness: the number of offspring an individual has, multiplied by the relatedness ( $r$ ) of each of those offspring to the individual.
$I$	Indirect fitness: the number of offspring an individual's relative has, multiplied by the relatedness ( $r$ ) of each of those offspring to the individual.
$C$	The cost an individual's behaviour has to the number of offspring that it can produce.
$B$	The benefit an individual's behaviour has to the number of offspring that a relative can produce.
$g$	Genetic value of an individual: the value a quantitative trait would have, if no environmental influences acted on it.
$\Delta_s$	The change, between generations, due to natural selection.
$\beta_{w,g}$	The correlation between fitness ( $w$ ) and genetic value ( $g$ ).
$\text{var}(g)$	The variance in genetic value ( $g$ ) in a population

Rule for adaptive behaviours/traits	Equation
Relatedness	$r = (n_i - n_p) / N_t$
Inclusive fitness	$w = D + I$
Hamilton's rule	$C < r B$
Price equation	$\Delta_s g = \beta_{w,g} \text{var}(g)$

	True	False
Spiteful behaviours (cost to the actor and recipient) exist when actors are more related to recipients than expected by chance.		
These equations predict alleles exist which produce a recognisable trait (e.g. appearance or pheromones) and also cause altruism towards unrelated individuals with that trait.		
These equations predict stress responses in some organisms include purposeful increases in mutation rate.		
Naked mole rat ( <i>Heterocephalus glaber</i> ) colonies of many adults, with a single breeding pair, can be explained by inclusive fitness.		
Natural selection acts more quickly when aphids are in their sexual lifecycle, than asexual lifecycle.		

# BUTTERFLY EYESPOTS

To investigate the evolution of butterfly eyespots, their mean size and colour was measured in each generation. Butterflies were split into 4 groups based on the colour (width of the golden ring) ratio (1), or size ratio (2), of their top and bottom eyespots. The most extreme butterflies in each group were bred together, and this was repeated with each successive generation.

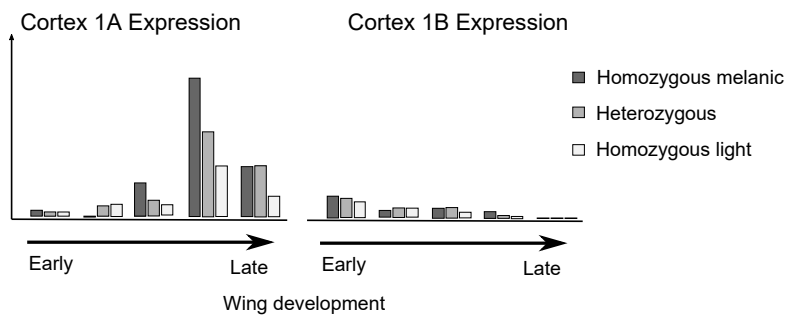


	True	False
Top:bottom eyespot colour ratio has greater genetic variation than top:bottom eyespot size ratio.	<input type="checkbox"/>	<input type="checkbox"/>
Simply selecting for top eyespots which are more golden will produce bottom eyespots which are more golden.	<input type="checkbox"/>	<input type="checkbox"/>
Many relatives of this species have very different top:bottom eyespot size ratios.	<input type="checkbox"/>	<input type="checkbox"/>
Eyespot size would remain constant if random butterflies of this experimental population were mated.	<input type="checkbox"/>	<input type="checkbox"/>

## INDUSTRIAL MELANISM

The light-coloured form of the English peppered moth (*Biston betularia*) was replaced by a melanic (dark) form, as camouflaging lichens disappeared due to pollution during the industrial revolution. Clean air, lichens and light moths have now returned.

To discover the genetic basis of this, hundreds of moths were genotyped and haplotypes were determined. Melanism was due to a dominant mutation in the *cortex* gene. *Cortex* mRNA is cut (spliced) into two forms, Cortex-1A and Cortex-1B. Cortex mRNA abundance was measured.



	True	False
There is a greater diversity of haplotypes in the population close to the melanic <i>cortex</i> allele, than further away.		
<i>Cortex-1A</i> is more likely to be driving melanism than <i>Cortex-1B</i> .		
The expression data are consistent with the melanic phenotype being dominant.		
The light form has reappeared because of back-mutation (reversion).		