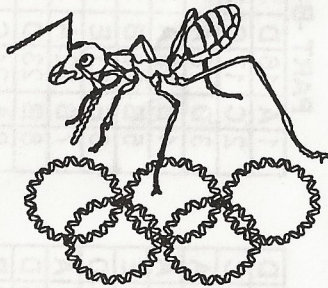


IBO '97

**ANSWER KEY OF
PRACTICAL &
THEORETICAL
TESTS**



8th INTERNATIONAL BIOLOGY OLYMPIAD
13-20 JULY 1997
ASHGABAT - TURKMENISTAN
ANSWER KEY

PRACTICAL TEST

PART -A-				PART -B-				PART -C-				PART -D-			
1	A	16	A	31	D	1	A	16	D	31	D	1	*	10	C
2	B	17	C	32	C	2	C	17	C	32	D	2	D	11	B
3	C	18	B	33	A	3	D	18	A	33	B	3	E	12	C
4	D	19	E	34	A	4	B	19	A	34	D	4	A	13	C
5	C	20	A	35	E	5	B	20	B	35	E	5	E	14	B
6	B	21	C	36	D	6	E	21	E	36	B	6	A	15	D
7	D	22	D	37	A	7	B	22	A	37	B	7	D	16	B
8	C	23	E	38	D	8	B	23	D	38	D	8	C	17	E
9	B	24	D	39	B	9	A	24	C	39	*	9	*	18	A
10	A	25	C	40	A	10	B	25	D	40	*				
11	*	26	B	41	C	11	E	26	C	41	A				
12	*	27	C	42	B	12	A	27	A	42	A				
13	C	28	B	43	C	13	C	28	D	43	C				
14	*	29	D	44	B	14	D	29	D	44	A				
15	*	30	C	45	D	15	B	30	A	45	E				
				46	E										

THEORETICAL TEST

PART -A-										PART -B-									
1	C	16	E	31	E	46	C	61	A	76	A	91	B	1	B	(16)	B	31	E
2	B	17	C	32	C	47	C	62	A	77	A	92	E	2	D	(17)	C	32	E
3	D	18	D	33	D	48	D	63	D	78	B	93	E	3	D	(18)	A	33	A
4	B	19	*	34	B	49	A	64	A	79	C	94	B	4	A	19	*	34	E
5	D	20	D	35	B	50	D	65	A	80	A	95	*	5	D	20	C	35	*
6	B	21	E	36	D	51	C	66	E	81	*	96	*	6	B	(21)	B	36	C
7	C	22	*	37	B	52	B	67	D	82	D	97	D	7	*	(22)	D	37	A
8	B	23	*	38	B	53	*	68	A	83	B	98	B	8	A	23	E	38	C
9	*	24	D	39	*	54	E	69	E	84	*	99	A	9	A	24	*	39	E
10	C	25	B	40	*	55	C	70	B	85	C	100	C	10	*	25	*	40	D
11	C	26	C	41	D	56	*	71	B	86	*			11	B	26	E	41	D
12	A	27	E	42	A	57	C	72	D	87	*			12	A	27	A	42	*
13	*	28	B	43	B	58	A	73	*	88	B			13	C	28	E	43	D
14	*	29	A	44	A	59	E	74	B	89	B			14	C	29	*	44	C
15	C	30	B	45	D	60	B	75	C	90	D			15	C	30	*	45	*

NOTE : The questions signed with '*' are skipped.

0 = 2 pt!